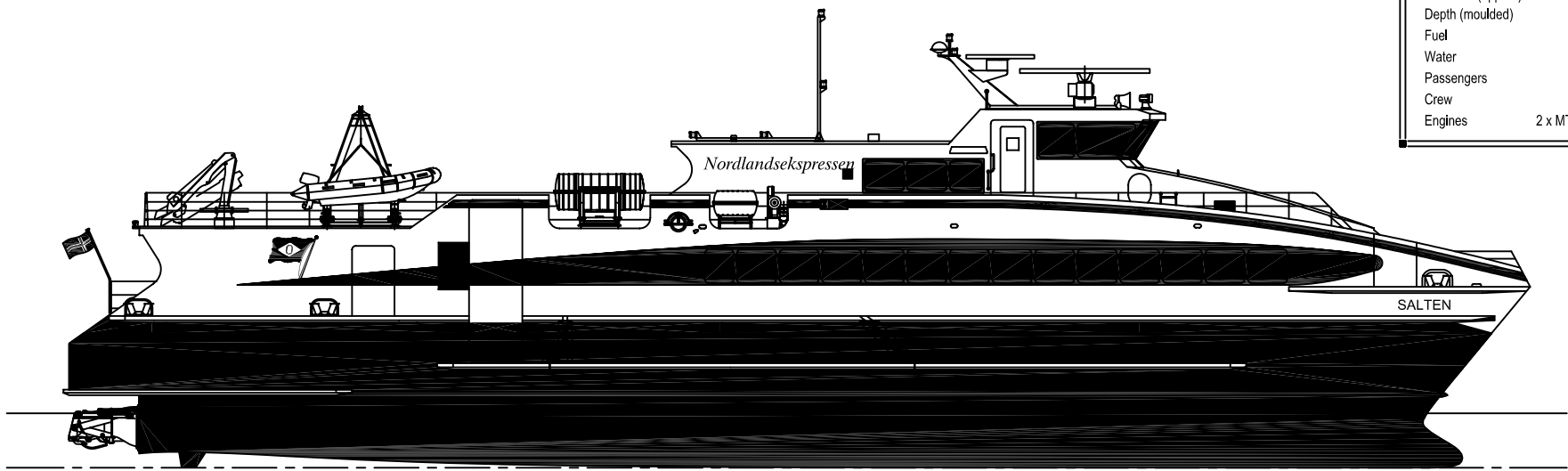
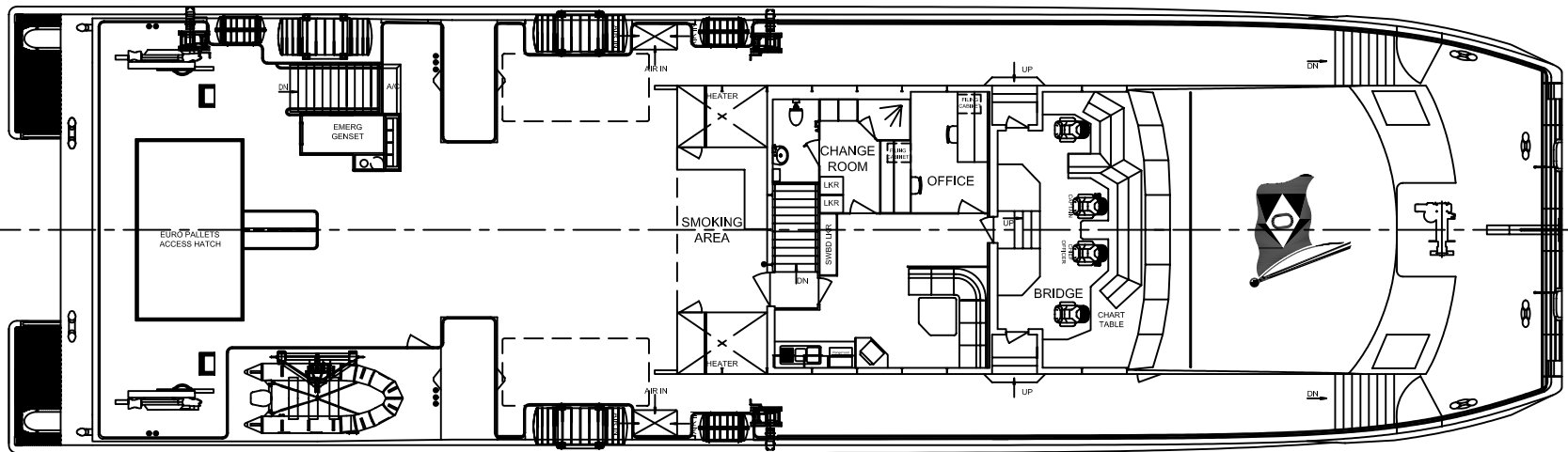


PRINCIPAL PARTICULARS	
Length Overall	41.3m
Length Waterline	36.1m
Beam	11.6m
Hull Draft (approx)	1.54m
Depth (moulded)	4.3m
Fuel	16600 l
Water	1500 l
Passengers	214
Crew	4
Engines	2 x MTU 16V4000 M70



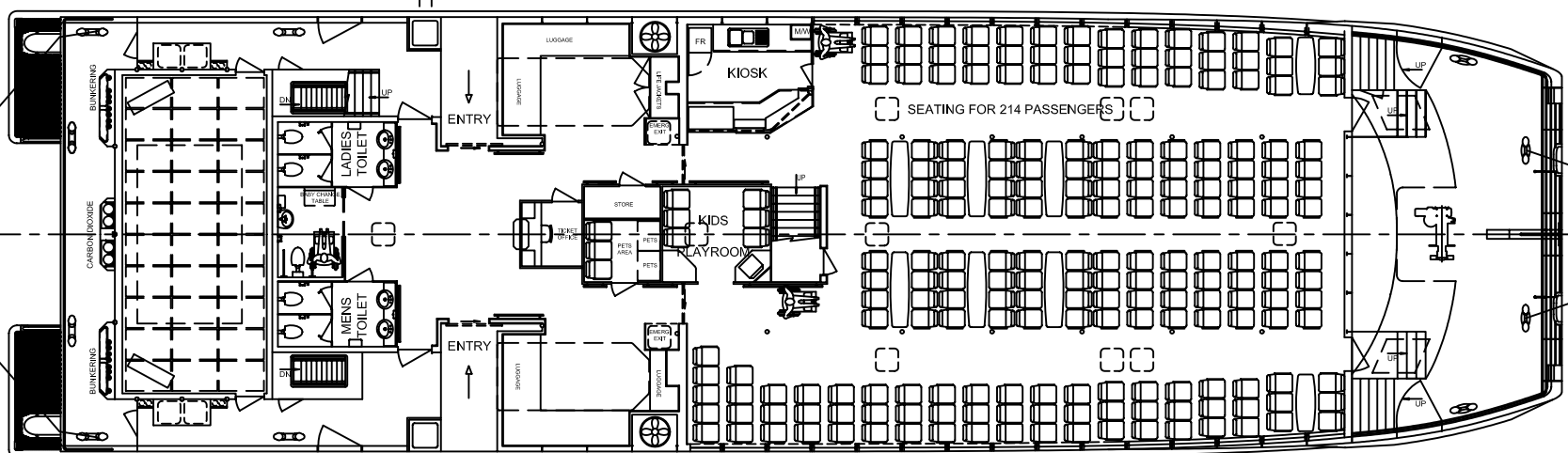
PROFILE

TR 32 31 30 29 28 27 26 25 24 23 22 21 20 19 18 17 16 15 14 13 12 11 10 9 8 7 6 5 4 3 2 1 0



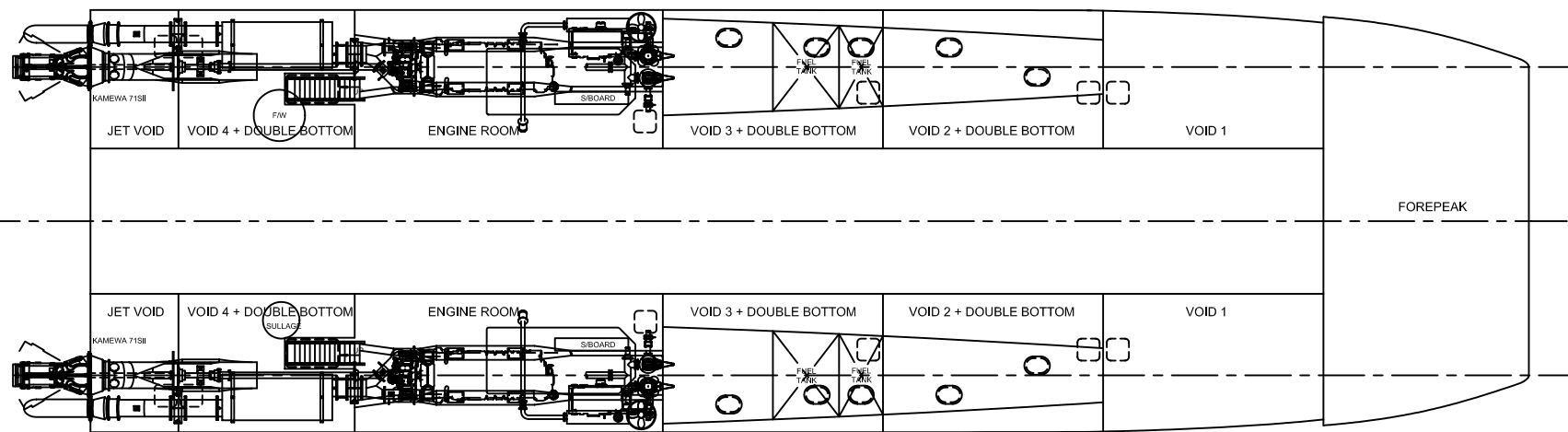
UPPER DECK

TR 32 31 30 29 28 27 26 25 24 23 22 21 20 19 18 17 16 15 14 13 12 11 10 9 8 7 6 5 4 3 2 1 0



MAIN DECK

TR 32 31 30 29 28 27 26 25 24 23 22 21 20 19 18 17 16 15 14 13 12 11 10 9 8 7 6 5 4 3 2 1 0



HULLS

TR 32 31 30 29 28 27 26 25 24 23 22 21 20 19 18 17 16 15 14 13 12 11 10 9 8 7 6 5 4 3 2 1 0

ISSUE	DATE	DESCRIPTION	APPROVED
G	09-04-03	LOWER FENDER MOVED, MID FWD HATCH ADDED; SUEZ TONNAGE ISSUE	JADAB
F	06-01-03	AS BUILT	JA
E	01-07-02	MDXUD WALLS TO 200 WIDE; LRAFT/DAVIT; WHEELHOUSE; SOFTPATCH	DAB
D	21-06-02	BOW; MOVE G-BOX TO ER; CRANE; AIR OUT CHANGED; RFD'S ADDED	DAB, JW
C	PRELIM	REV FITOUT, CRANE, WH, MAST - FOR CLIENT COMMENT	DAB
B	21-05-02	VARIOUS REVISIONS	DAB
A	03-05-02	FIRST ISSUE	DAB

AUSTAL SHIPS

AUSTAL SHIPS PTY. LTD. A.C.N. 079 160 679
 100 Clarence Beach Road, Henderson, Western Australia 6166
 Telephone: +61 8 9410 1111. Facsimile: +61 8 9410 2564

This drawing has been produced by Austal Ships Pty Ltd.
 No part may be copied, modified or reproduced in any manner
 without prior permission from Austal Ships Pty Ltd.

PROJECT:	41.3m PASSENGER CATAMARAN	
DRAWING NAME:	GENERAL ARRANGEMENT	
CHECKED:	S. DAVENPORT	DATE: MAY 2002
DRAWN:	R. HOWELL'S DAVENPORT	SCALE: 1:100
DRAWING No:	242-1GAR	REVISION No: G
CLIENT:	OVD'S	HULL: 242 & 243