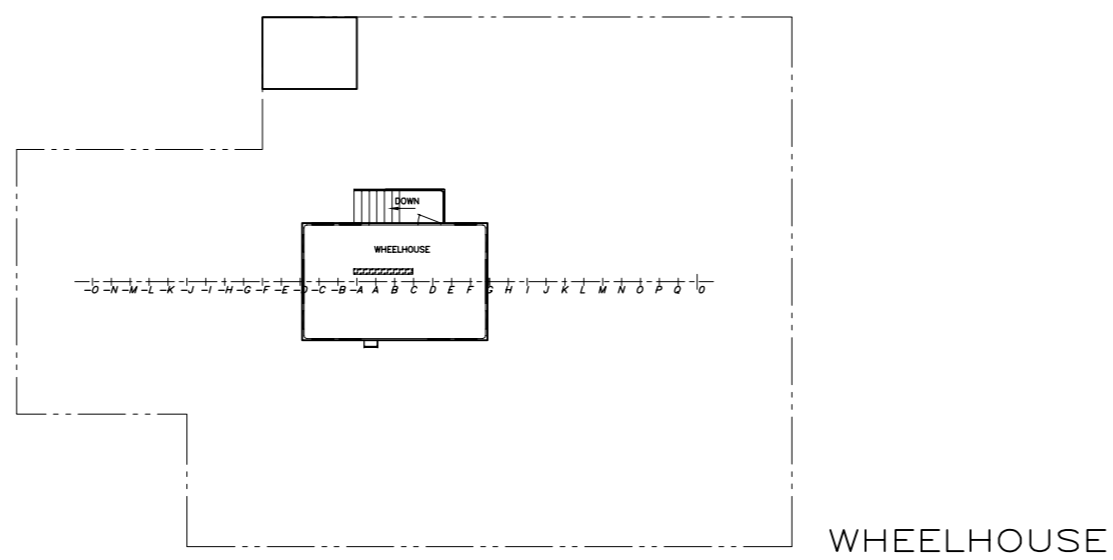
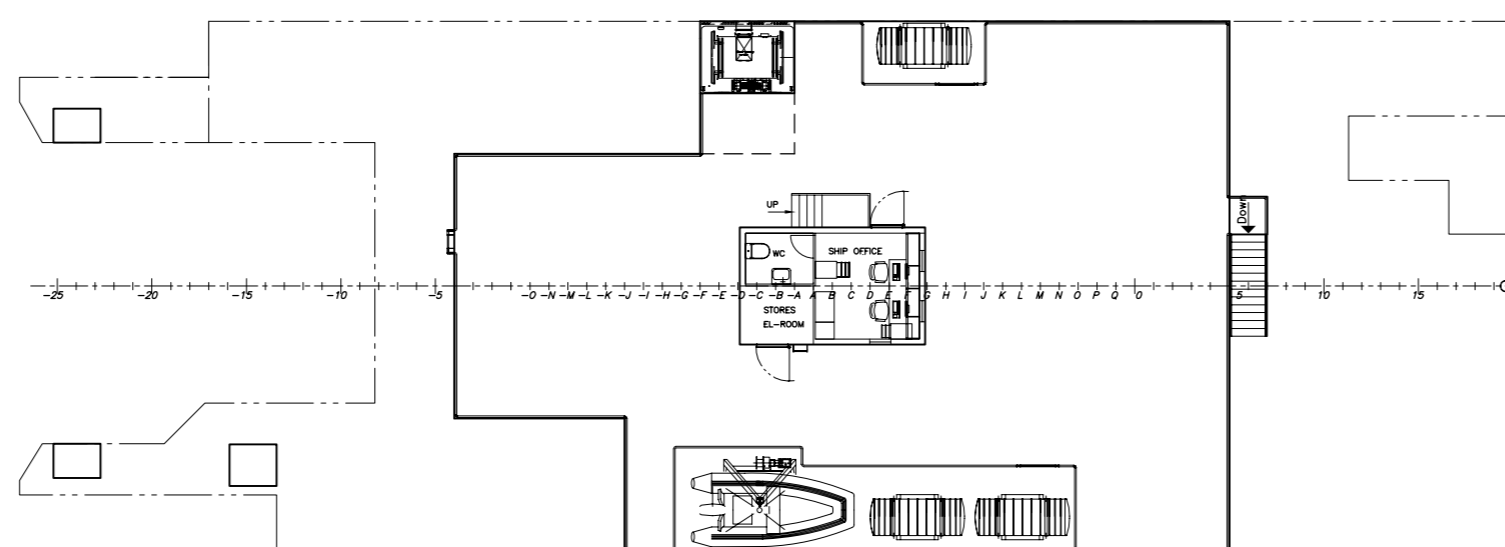


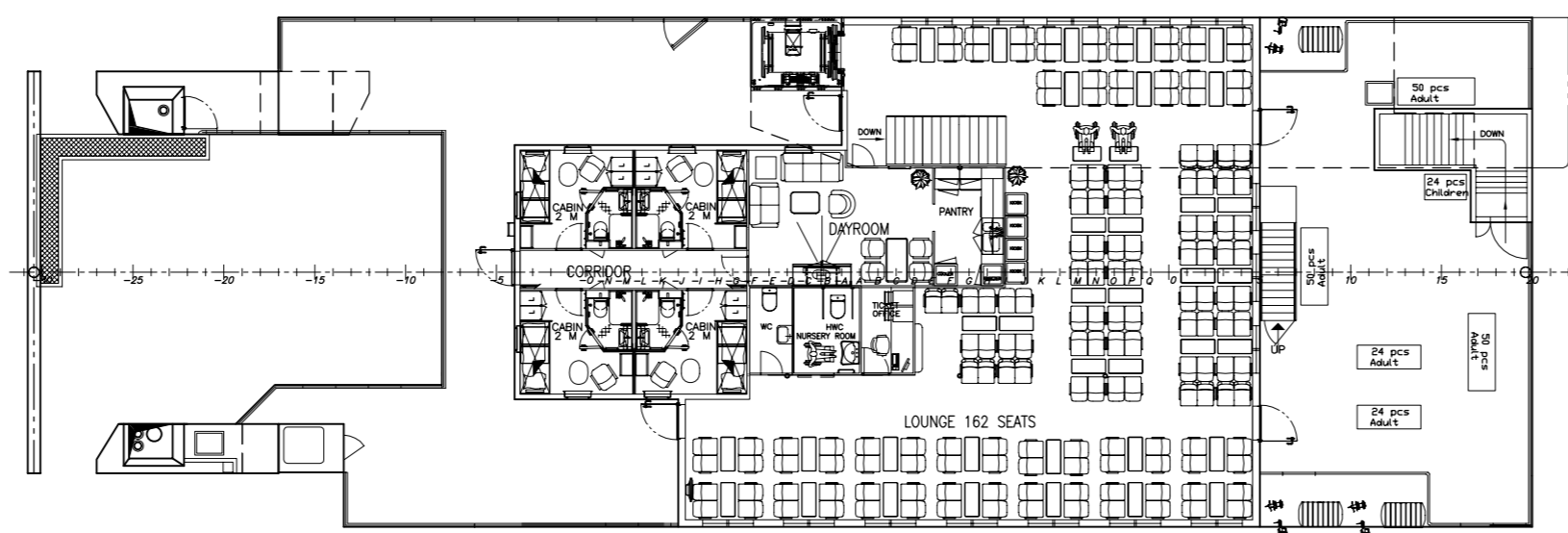
PROFILE STB



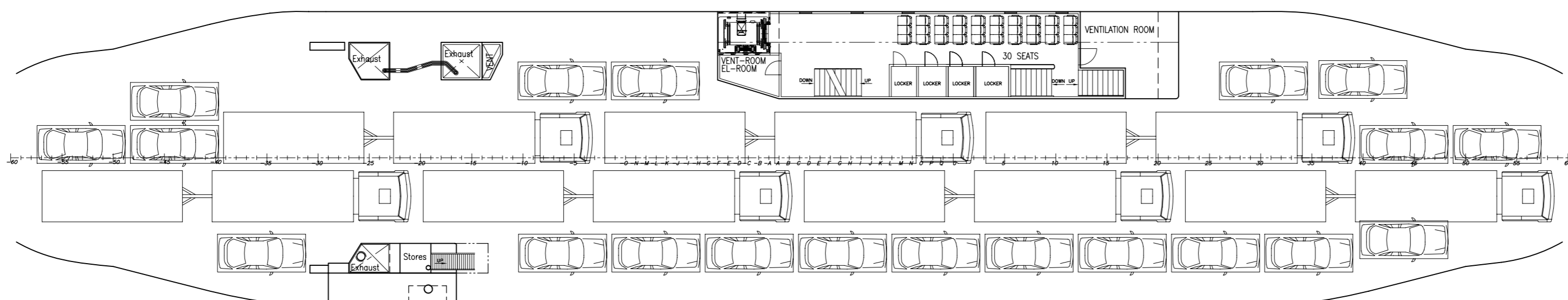
WHEELHOUSE



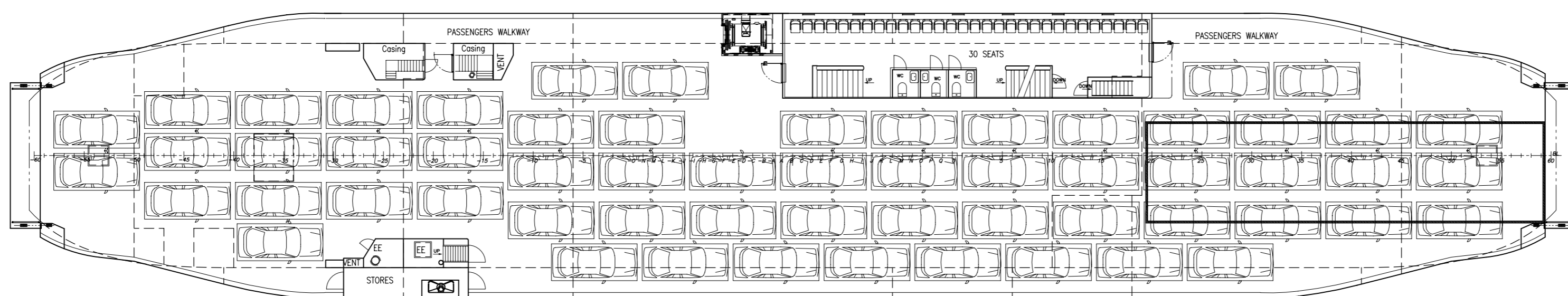
BOAT DECK



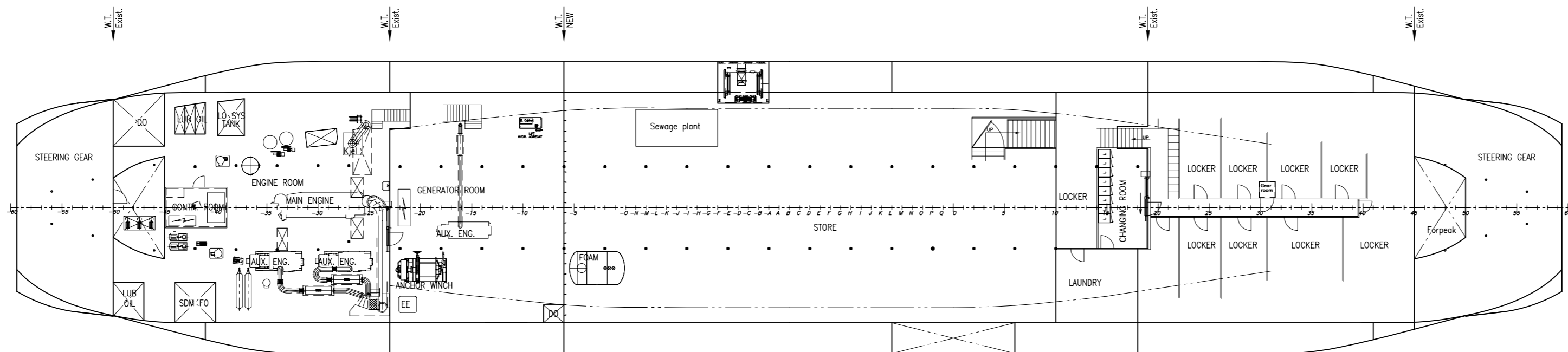
SALOON DECK



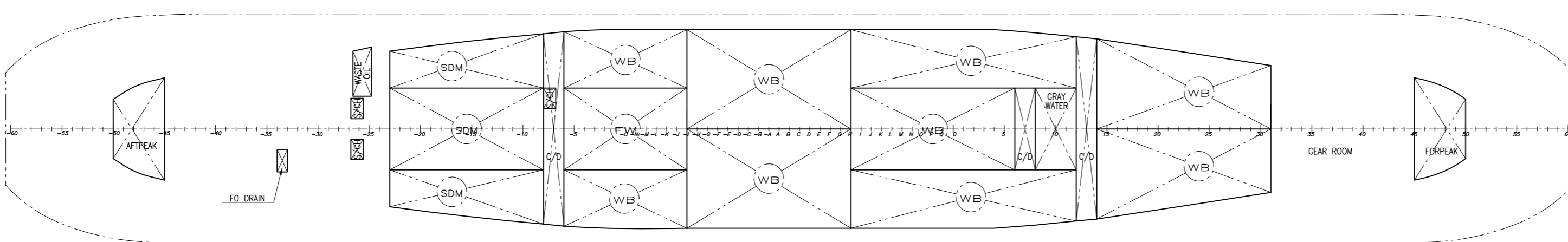
TWEEN DECK



MAIN DECK




BELOW MAIN DECK



BELOW TANK TOP

MAIN DIMENSIONS	EXIST:	REBUILT:
LENGTH OVER ALL, LOA:	76,60 m	76,60 m
LENGTH P.P., LPP:	70,00 m	70,00 m
LENGTH CARDECK:	75,40 m	75,40 m
BEAM MOULDED:	11,25 m	14,25 m
LARGEST BEAM:	11,45 m	14,45 m
DEPTH:	4,20 m	4,20 m
DRAFT:	3,10 m	3,10 m
FRAME SPACING:	0,50 m	0,50 m
PASSENGERS:	259	199
CAR UNITS:	50	60
TRUCK UNITS:	-	7
SERVICE AREA: DOMESTIC AREA 2	-	-

Rev.	Description:	Date:	Constr./Drawn:	Contr.:	Date/Sign:
		21.08.06	JJ		
		Scale:	Approved:		
		1:200			
M/F "VIRAK" LIPA GENERAL ARRANGEMENT REBUILT 60 PBE					 MYRE HÅRSTAD ARKHANGELSK www.nsk.as nsk@nsk.as
Reference:					Sheet no: 1887 101 001 C7 Replacement for:

ALL RIGHTS RESERVED.
 This drawing is the property of NORDNORSK SKIPSKONSULT AS and it must not be copied or imparted to any unauthorized third party.
 The receipt of the drawing implies that the conditions mentioned herein are accepted.