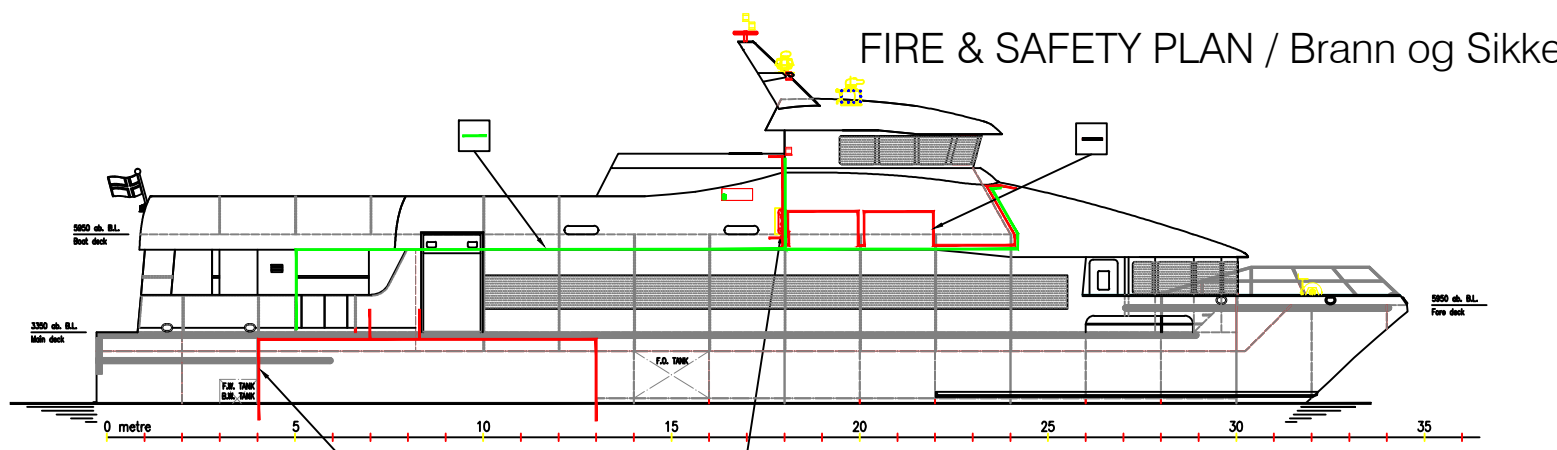
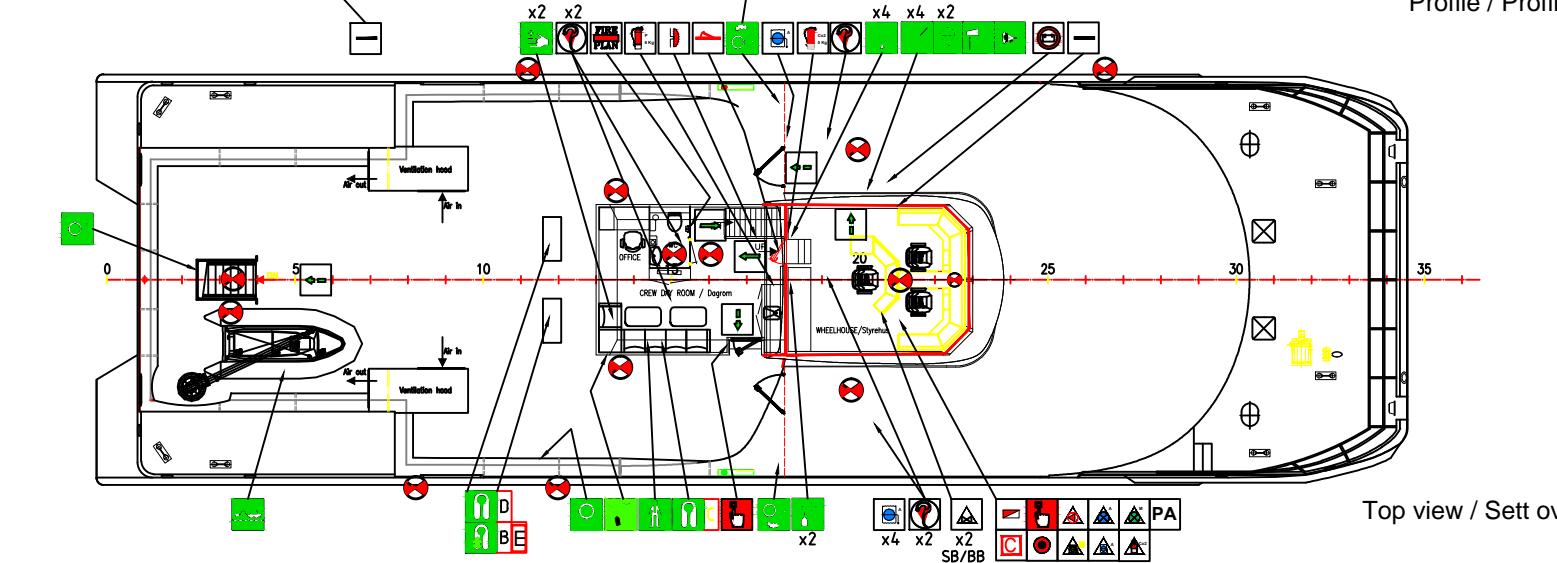


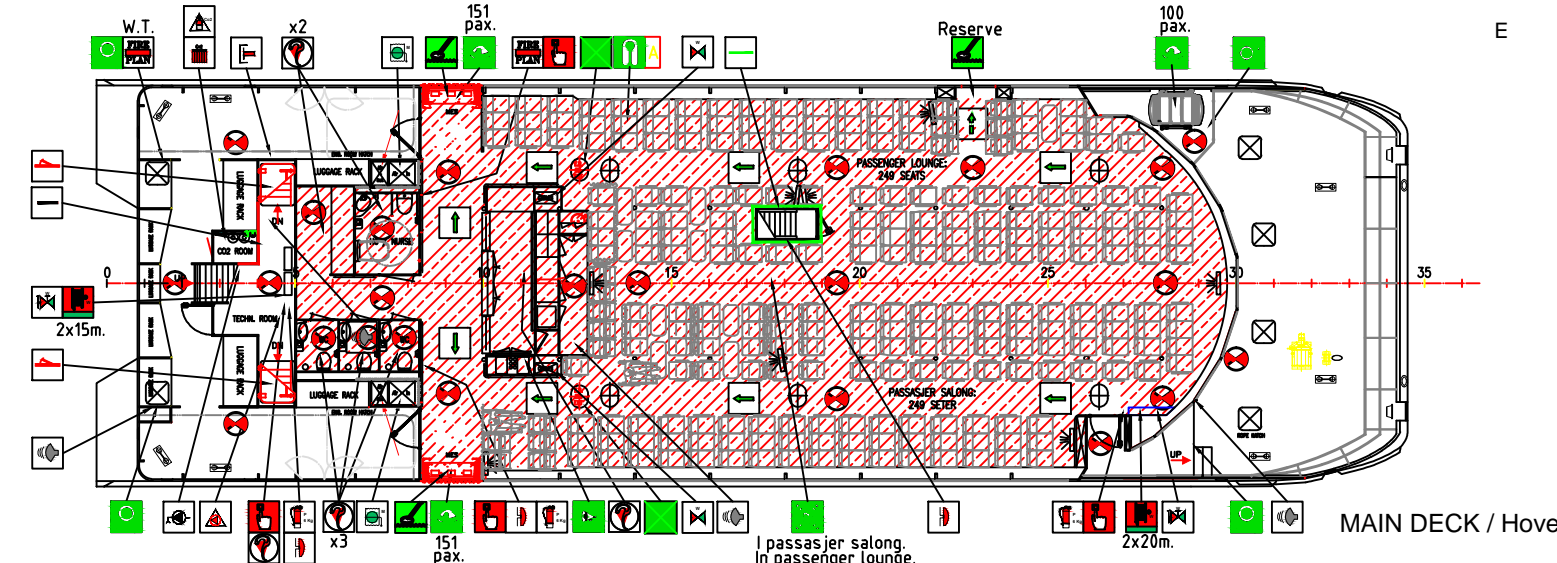
FIRE & SAFETY PLAN / Brann og Sikkerhetsplan



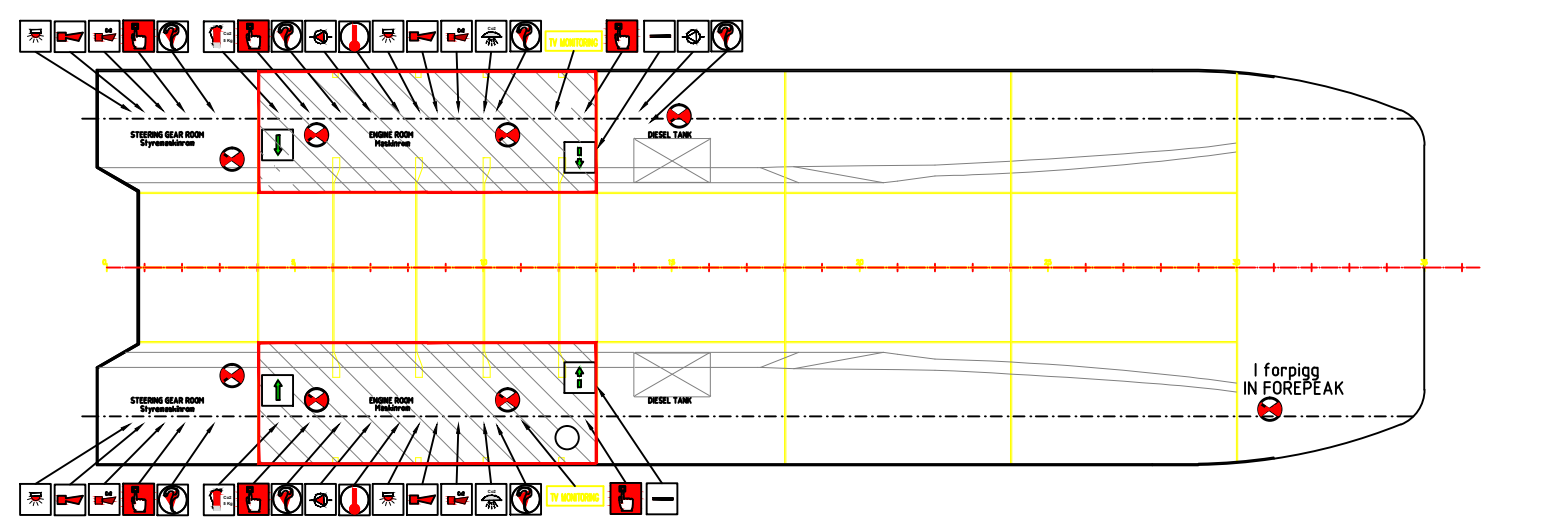
Profile / Profil



Top view / Sett ovenfra



MAIN DECK / Hoved dekk



SYMBOL	DESCRIPTION/Beskrivelse	NUMBER Antall
⊗	NØDLYS EMERGENCY LIGHT 1 special lys over Control Stasjon 1 special light above Control Station	46
⊕	VARME DETEKTOR HEAT DETECTOR	2
⊖	BRANN PUMPE FIRE PUMP	2
⊗	BRANN ISOLERINGS VENTIL ISOLATING VALVES	2
⊕	SPRINKLER PUMPE SPRINKLER PUMP	1
⊖	FJERNSTART BRANNPUMPE REMOTE CONTROLLED FIRE PUMPS	2
⊗	RØK DETEKTOR SMOKE DETECTOR	20
⊕	BLINKLYS BRANNALARM FLASH LIGHT FIRE ALARM	4
⊖	RINGEKLOKKE FOR BRANNALARM BELL FIRE ALARM	4
⊗	HORN FOR BRANNALARM HORN FIRE ALARM	4
⊕	CO ₂ HORN CO ₂ HORN	4
⊖	SPRINKLER CO ₂ BESKYTTET OMRÅDE SPACE PROTECTED BY CARBON DIOXIDE	-
⊗	CO ₂ UTLØSER STASJON CARBON DIOXIDE RELEASE STATION	2
⊕	CO ₂ BATTERI CARBON DIOXIDE BATTERY	1
⊖	BERBART BRANNSLUKNINGS APPARAT CO ₂ ,5kg PORTABLE EXTINGUISHERS CO ₂ ,5kg	3
⊗	BERBART BRANNSLUKNINGS PULVER ,6kg PORTABLE EXTINGUISHERS Powder 6kg	4
⊕	SPRINKLER BESKYTTET OMRÅDE SPACE PROTECTED BY WATER (SPRINKLER)	-
⊖	TRYKKNAPP FOR BRANNALARM PUSH-BUTTON FOR FIRE ALARM (Manually operated Call Point)	12
⊗	BRANN ALARM SENTRAL CONTROL PANEL FOR FIRE DETECTION AND ALARM SYSTEM	1
⊕	TRYKKNAPP FOR GENERAL ALARM PUSH BUTTON FOR GENERAL ALARM	1
⊖	BRANNSLANGE/STRALERØR/TÅKESPREDER HOSE BOX WITH SPRAY/JET FOG NOZZLE	2 x 15m 2 x 20m
⊗	BRANNHYDRANT/VANN FIRE HYDRANT WATER	2
⊕	INTERNASJONAL LANDTILKOPLING INTERNATIONAL SHORE CONNECTION	1
⊖	BERBART LENSEPUMPE BILGE PUMP PORTABLE	1
⊗	BRANNSPIELD MASKIN OMRÅDE FIRE DAMPER MACHINERY SPACE	2
⊕	FJERNKONTROLL FOR BRANNSPIELD MASKIN OMRÅDE REMOTE CONTROL FOR FIRE DAMPER MACHINERY SPACE	1
⊖	BRANNSPIELD/RØKSPIELD VENTILASJON FIRE DAMPER IN VENT DUCT	5
⊗	FJERNKONTROLL BRANNSPIELD VENTILASJON REMOTE CONTROL FIRE DAMPER	1
⊕	CONTROL STASJON CONTROL STATION	1
⊖	NØD ELEKTRISK STRØM (BATTERI) Emergency Electrical Power (battery)	1
⊗	FJERNSTOPP VENTILASJON MASKIN OMRÅDE Vent. remote Shut-off, Machinery Space	1
⊕	FJERNSTOPP VENTILASJON OPPHOLDS OMRÅDE Vent. remote Shut-off, Accommodation Space	1
⊖	FJERNKONTROLL HURTIGSTENGER FOR BRENNOLJE Remote control for fuel oil valves	2
⊗	BRANN DØR FIRE DOOR	3
⊕	BRANN SKOTT FIRE BULKHEAD	-
⊖	BRANN OG SIKKERHETSPLAN FIRE & SAFETY CONTROL PLAN (ONE IN W.T. BOX OUTSIDE AFT PORT SIDE)	3
PA	PA-ANLEGG PUBLIC ADDRESS SYSTEM	1
⊕	PA-HØYTALER FOR ALARMER OG INFORMASJON PA-speaker for alarms and information	3
⊖	RØKTETT SKILLE SMOKE-TIGHT PARTITION	-

SYMBOL	DESCRIPTION/Beskrivelse	NUMBER Antall
⊕	EPIRB (NØD POSISJON-INDICATOR RADIO SIGNAL EPIRB (emergency position-indicating radio beacon)	1
100 pax.	REDNINGSFLÅTE 100 personer LIFERAFT 100 pax.	1
151 pax.	MØNSTRING/OMBORSTJONSPASS for REDNINGSFLÅTE 151 pers MES Station w/ raft 151 pax.	2
⊕	NØDRACKET m/FALLSKJERM ROCKET PARACHUTE FLARES	12
⊖	LINEKASTER m/prosjektil/line LINE-THROWING APPLIANCE w/projectiles/line	4
⊕	3stk BERBARE VHF, GMDSS VHF +1 LUFT RADIO 3 OFF PORTABLE VHF, GMDSS VHF + 1 AIR RADIO	4
⊖	RADAR TRANSPONDER RADAR TRANSPONDER	2
⊕	SIGNAL LAMPE DAYLIGHT SIGNALING LAMP	1
⊖	FØRSTEHJELPS UTSTYR, MEDISIN/AKKUTT KOFFERT First aid equipment	2
A	LIVEST, VOKSNE- under sete LIFE JACKET, Adults-under seats	249
B	LIVEST, BARN LIFE JACKET, Children, +10% of N	26
C	LIVEST, VOKSNE MANNSKAP LIFE JACKET, Adults, Crew	6
D	LIVEST, VOKSNE, + 5% of N LIFE JACKET, Adults, + 5% of N	14
E	LIVEST, BABY LIFE JACKET, Baby	5
⊕	OPPLÅSBAR ARBEIDSVEST INFATABLE WORK VEST, Crew	3
⊖	REDNINGSDRAKT IMMERSION SUIT	6
⊕	LIVBØYE m/LYS OG RØYK LIFE BUOY with light and Smoke (MOB)	2
⊖	LIVBØYE m/LINE LIFE BUOY with line	4
⊕	LIVBØYE m/selvantennende lys LIFE BUOY with self-igniting light	2
⊖	NØDUTGANG fra MASKIN ROM Emergency Exit from Engine Room	2
⊕	MEGAFON Megaphone	2
⊖	REDNINGSFARTØY Rescue Boat	1
⊕	SEKUNDER NØDUTGANG Secondary Escape Route	-
⊖	NØDUTGANG Escape route	-
⊕	MØNSTRINGSPLASS (i passasjer salong) MUSTER STATION (in passenger lounge)	1
⊖	MARINE EVAKUERINGS SYSTEM (MES) Marine Evacuation System (MES)	3

GENERAL ALARM:

MS SOLLIFJELL

CALL SIGNAL / Kjenningssignal: LNFR

IMO nr: 9562996

- Length over all/Total lengde: 35,3 m
- Beam moulded / Bredde i riss : 10,5 m
- Beam over all / Total bredde: 10,9 m
- Hull Depth / Skrog dypde: 3,1 m
- Passenger capacity: 251 pers.
- Kapasitet antall passasjer: 251 pers.
- Total people onboard (N): 257 pers.
- Totalt antall personer ombord: 257 pers.

Rules & Regulations/Regler og forskrifter
NMD Regulations for service area 3
HSC Code 2000

REV.	TEXT	REV.DATE	DRAWN	CHECK	APP.
J	Changed number of total people onboard 256 to 257	15.11.17	LEL	T.E.G	T.E.G
I	Updated lifevests, PAX, etc.	14.11.17	LEL	T.E.G	T.E.G
H	Updated	14.11.17	FCO	GAR	TS
G	As built	11.03.10	FCO	JIC	FCO
F	Updated according to comments from SD	11.02.10	FCO	JIC	FCO
E	General updates	19.01.10	FCO	JIC	FCO
D	Updated number of lifevests	13.01.10	FCO	FCO	FCO
C	Wheelhouse Em.Exit moved to Port Side & Owners comments	27.11.09	GAS	FCO	foo
B	Fireman outfit deleted. Issued for approval	06.11.09	GAS	FCO	foo
A	First Issue	23.10.09	GAS	VRU	FCO

THIS DRAWING IS THE PROPERTY OF LMG MARIN AND BÅTSERVICE MANDAL. THE DRAWING SHALL NOT BE DISCLOSED TO ANY THIRD PARTY WITHOUT THE WRITTEN PRIOR CONSENT OF LMG MARIN AND BÅTSERVICE MANDAL.

	NAVAL ARCHITECTS & ENGINEERS LMG MARIN AS PÅLSTADVEIEN 11 4810 SANDNES T: +47 37 27 12 00 E: lmg@lmgmarin.no	DRAWING NO.	84-50-17468-H
	CLIENT Båtservice Mandal as LMG OMB. NO. 299006-T-505-A-001	PROJECT CarbonCat 35	TITLE
LMG TOOL 1:100	PRIMARY SCALE 1:100	SHEET SIZE A1	SHEET 1 of 1