

THICKNESS MEASSURING REPORT

Customer:	SLIPEN MEKANISKE AS	Report nr:	2017-016-2		
Ref:	ASGEIR LISØ	Date:	10.05.2017		
Project:	TYKKELSEMÅLING AV MS RØDØLYLØVEN	Location:	SLIPEN		
Drawing nr:	VEDLEGG	Store:	SLIPPVOGN		
Manufacturer:	NA	Extent:	SPOT		
Prosedure:	TP109QC	Matrial:	ALUMINIUM		
Probe:	0 SM KK	Couplant:	UT Gel	Surface:	MALT
Frequency:	4mhz	Range:	0-50	Thickness:	REF TEGNING
Ecuipment:	USM OG+	Ref block:	Step Block 5-30mm	Block id:	TP01

Testresults

Pos	Thickness	Normal WT	Diffrece WT	Min WT
-----	-----------	-----------	-------------	--------

Utført tykkelsemåling av begge skrog STB/BB side under vannlinje.
Omfang og kontrollerte områder i henhold til Slipen Mekaniske AS, Asgeir Lisø.
Generelt fine overflater.
Se vedlagt skisse for kontrollerte områder. (3 punkt mellom hver 600mm.)

Operator

Name Robert Myrvang 8772-N3

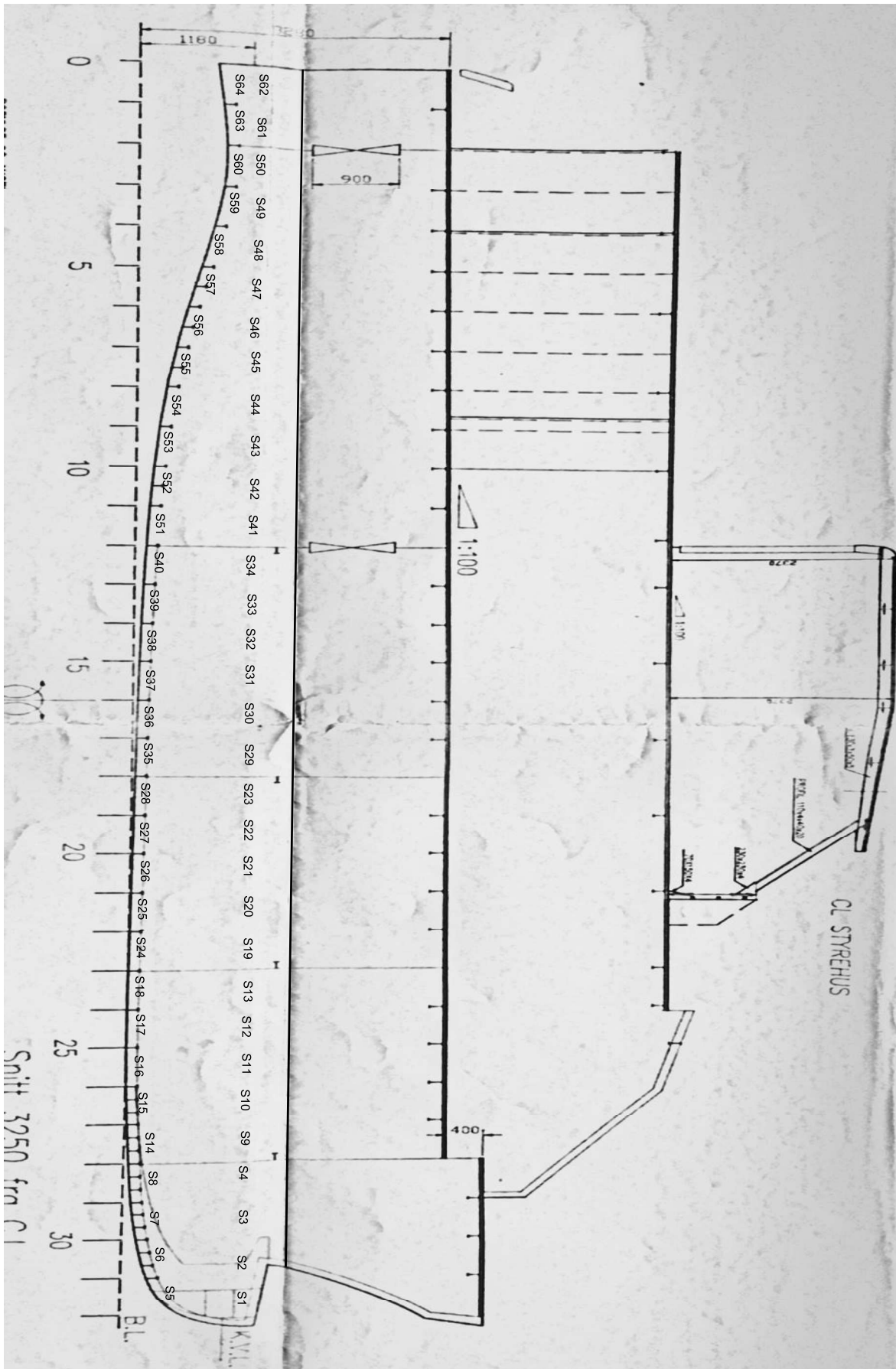
Signature

stamp

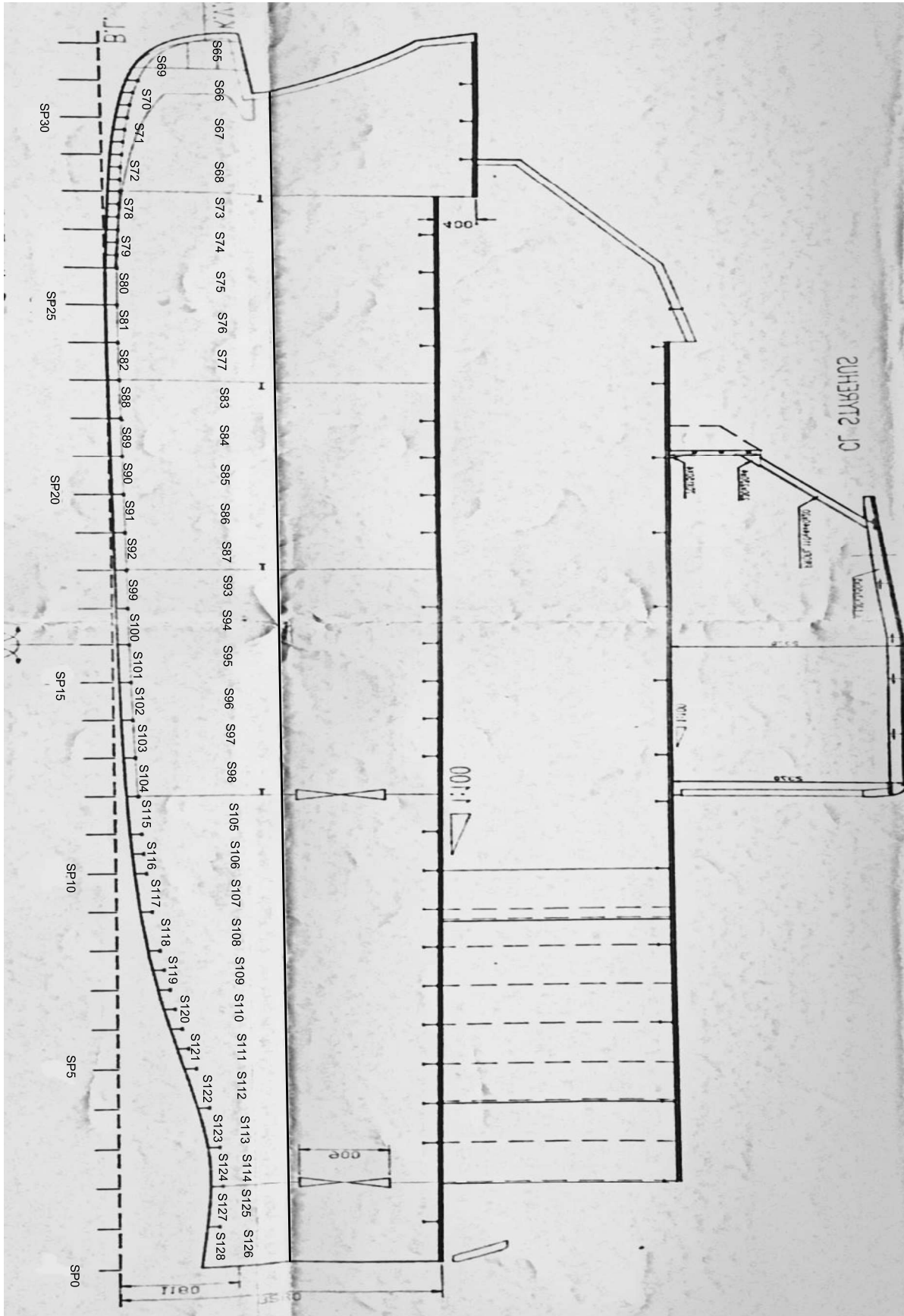


Vedlegg til Rapport nr: 2017-016-2

STB-SIDE



BB-SIDE



THICKNESS MEASUREMENT REPORT

Substantial corr
Below class min

Ship's Name:	MS RØDØYLØVEN	Id.No:	Element / Frame No.	Structural Element	Draw ref.	Orig thk. mm	Class min thk. mm	Gauged		Diminution		Renewed		Comments, Defects found
								Port mm	Stbd mm	Port mm	Starboard %	Port mm	Stbd mm	
		2017-016-2	SP32-SP31	PLATEKLEDDNING STB SKROGSIDE	S1	5.0	4.0	6.0	6.4	0.0	0.0%	0.0	0.0%	
			SP31-SP30	PLATEKLEDDNING STB SKROGSIDE	S2	5.0	4.0	6.0	6.2	0.0	0.0%	0.0	0.0%	
			SP30-SP29	PLATEKLEDDNING STB SKROGSIDE	S3	5.0	4.0	6.2	6.3	0.0	0.0%	0.0	0.0%	
			SP29-SP28	PLATEKLEDDNING STB SKROGSIDE	S4	5.0	4.0	6.0	6.0	0.0	0.0%	0.0	0.0%	
			SP32-SP31	PLATEKLEDDNING STB SKROG BUNN	S5	6.0	4.8	NA	6.0	-	-	0.0	0.0%	
			SP31-SP30	PLATEKLEDDNING STB SKROG BUNN	S6	6.0	4.8	NA	6.4	-	-	0.0	0.0%	
			SP30-SP29	PLATEKLEDDNING STB SKROG BUNN	S7	6.0	4.8	NA	6.0	-	-	0.0	0.0%	
			SP29-SP28	PLATEKLEDDNING STB SKROG BUNN	S8	6.0	4.8	NA	6.0	-	-	0.0	0.0%	
			SP28-SP27	PLATEKLEDDNING STB SKROGSIDE	S9	5.0	4.0	5.6	5.2	0.0	0.0%	0.0	0.0%	
			SP27-SP26	PLATEKLEDDNING STB SKROGSIDE	S10	5.0	4.0	5.4	5.5	0.0	0.0%	0.0	0.0%	
			SP26-SP25	PLATEKLEDDNING STB SKROGSIDE	S11	5.0	4.0	5.5	5.5	0.0	0.0%	0.0	0.0%	
			SP25-SP24	PLATEKLEDDNING STB SKROGSIDE	S12	5.0	4.0	5.5	5.5	0.0	0.0%	0.0	0.0%	
			SP24-SP23	PLATEKLEDDNING STB SKROGSIDE	S13	5.0	4.0	5.4	5.4	0.0	0.0%	0.0	0.0%	
			SP28-SP27	PLATEKLEDDNING STB SKROG BUNN	S14	6.0	4.8	NA	6.0	-	-	0.0	0.0%	
			SP27-SP26	PLATEKLEDDNING STB SKROG BUNN	S15	6.0	4.8	NA	5.7	-	-	0.3	5.0%	
			SP26-SP25	PLATEKLEDDNING STB SKROG BUNN	S16	6.0	4.8	NA	5.9	-	-	0.1	1.7%	
			SP25-SP24	PLATEKLEDDNING STB SKROG BUNN	S17	6.0	4.8	NA	5.9	-	-	0.1	1.7%	
			SP24-SP23	PLATEKLEDDNING STB SKROG BUNN	S18	6.0	4.0	NA	5.8	-	-	0.2	3.3%	
			SP23-SP22	PLATEKLEDDNING STB SKROGSIDE	S19	5.0	4.0	5.4	5.4	0.0	0.0%	0.0	0.0%	
			SP22-SP21	PLATEKLEDDNING STB SKROGSIDE	S20	5.0	4.0	5.7	5.4	0.0	0.0%	0.0	0.0%	
			SP21-SP20	PLATEKLEDDNING STB SKROGSIDE	S21	5.0	4.0	5.3	5.4	0.0	0.0%	0.0	0.0%	
			SP20-SP19	PLATEKLEDDNING STB SKROGSIDE	S22	5.0	4.0	5.4	5.4	0.0	0.0%	0.0	0.0%	
			SP19-SP18	PLATEKLEDDNING STB SKROGSIDE	S23	5.0	4.0	5.8	5.8	0.0	0.0%	0.0	0.0%	
			SP23-SP22	PLATEKLEDDNING STB SKROG BUNN	S24	6.0	4.8	NA	5.4	-	-	0.6	10.0%	
			SP22-SP21	PLATEKLEDDNING STB SKROG BUNN	S25	6.0	4.8	NA	6.0	-	-	0.0	0.0%	
			SP21-SP20	PLATEKLEDDNING STB SKROG BUNN	S26	6.0	4.8	NA	6.0	-	-	0.0	0.0%	
			SP20-SP19	PLATEKLEDDNING STB SKROG BUNN	S27	6.0	4.8	NA	6.0	-	-	0.0	0.0%	
			SP19-SP18	PLATEKLEDDNING STB SKROG BUNN	S28	6.0	4.8	NA	6.0	-	-	0.0	0.0%	
			SP18-SP17	PLATEKLEDDNING STB SKROGSIDE	S29	5.0	4.0	6.0	5.5	0.0	0.0%	0.0	0.0%	
			SP17-SP16	PLATEKLEDDNING STB SKROGSIDE	S30	5.0	4.0	5.9	4.7	0.0	0.0%	0.3	6.0%	
			SP16-SP15	PLATEKLEDDNING STB SKROGSIDE	S31	5.0	4.0	5.5	4.5	0.0	0.0%	0.5	10.0%	
			SP15-SP14	PLATEKLEDDNING STB SKROGSIDE	S32	5.0	4.0	5.0	5.0	0.0	0.0%	0.0	0.0%	
			SP14-SP13	PLATEKLEDDNING STB SKROGSIDE	S33	5.0	4.0	4.9	4.8	0.1	2.0%	0.2	4.0%	
			SP13-SP12	PLATEKLEDDNING STB SKROGSIDE	S34	5.0	4.0	5.0	5.0	0.0	0.0%	0.0	0.0%	
			SP18-SP17	PLATEKLEDDNING STB SKROG BUNN	S35	6.0	4.8	NA	6.0	-	-	0.0	0.0%	
			SP17-SP16	PLATEKLEDDNING STB SKROG BUNN	S36	6.0	4.8	NA	5.9	-	-	0.1	1.7%	
			SP16-SP15	PLATEKLEDDNING STB SKROG BUNN	S37	6.0	4.8	NA	6.0	-	-	0.0	0.0%	
			SP15-SP14	PLATEKLEDDNING STB SKROG BUNN	S38	6.0	4.8	NA	6.0	-	-	0.0	0.0%	
			SP14-SP13	PLATEKLEDDNING STB SKROG BUNN	S39	6.0	4.8	NA	6.2	-	-	0.0	0.0%	
			SP13-SP12	PLATEKLEDDNING STB SKROG BUNN	S40	6.0	4.8	NA	5.9	-	-	0.1	1.7%	
			SP12-SP11	PLATEKLEDDNING STB SKROGSIDE	S41	5.0	4.0	5.2	5.5	0.0	0.0%	0.0	0.0%	
			SP11-SP10	PLATEKLEDDNING STB SKROGSIDE	S42	5.0	4.0	5.0	4.7	0.0	0.0%	0.3	6.0%	
			SP10-SP09	PLATEKLEDDNING STB SKROGSIDE	S43	5.0	4.0	5.5	4.5	0.0	0.0%	0.5	10.0%	
			SP09-SP08	PLATEKLEDDNING STB SKROGSIDE	S44	5.0	4.0	5.0	5.0	0.0	0.0%	0.0	0.0%	
			SP08-SP07	PLATEKLEDDNING STB SKROGSIDE	S45	5.0	4.0	4.9	4.8	0.1	2.0%	0.2	4.0%	
			SP07-SP06	PLATEKLEDDNING STB SKROGSIDE	S46	5.0	4.0	5.0	5.0	0.0	0.0%	0.0	0.0%	
			SP06-SP05	PLATEKLEDDNING STB SKROGSIDE	S47	5.0	4.0	5.0	5.0	0.0	0.0%	0.0	0.0%	
			SP05-SP04	PLATEKLEDDNING STB SKROGSIDE	S48	5.0	4.0	5.0	5.5	0.0	0.0%	0.0	0.0%	

Inner deck

Robert Myrnes

THICKNESS MEASUREMENT REPORT

Substantial corr
Below class min

Ship's Name:	MS RØDDØY LØVEN	Id.No:	Report No:	2017-016-2		Legend:		Renewed		Comments, Defects found			
				Port	Stbd	Port	Stbd	Port	Stbd				
Tank / Space	Tank/Space Reverse side	Structural Element	Element / Frame No.	Draw ref.	Orig thk. mm	Class min thk. mm	Gauged Port mm	Gauged Stbd mm	Port mm	Stbd mm	Diminution Port mm	Diminution Stbd mm	Starboard %
SHIPSIDE	MOTORROM	PLATEKLEDDNING STB SKROGSSIDE	SP04-SP03	S49	5.0	4.0	4.9	5.0	0.1	2.0%	0.0	0.0	0.0%
SHIPSIDE	MOTORROM	PLATEKLEDDNING STB SKROGSSIDE	SP03-SP02	S50	5.0	4.0	5.0	5.0	0.0	0.0%	0.0	0.0	0.0%
SHIPSIDE	MOTORROM	PLATEKLEDDNING STB SKROG BUNN	SP12-SP11	S51	6.0	4.8	NA	6.0		-	0.0	0.0	0.0%
SHIPSIDE	MOTORROM	PLATEKLEDDNING STB SKROG BUNN	SP11-SP10	S52	6.0	4.8	NA	6.0		-	0.0	0.0	0.0%
SHIPSIDE	MOTORROM	PLATEKLEDDNING STB SKROG BUNN	SP10-SP09	S53	6.0	4.8	NA	6.0		-	0.0	0.0	0.0%
SHIPSIDE	MOTORROM	PLATEKLEDDNING STB SKROG BUNN	SP09-SP08	S54	9.0	7.2	NA	9.0		-	0.0	0.0	0.0%
SHIPSIDE	MOTORROM	PLATEKLEDDNING STB SKROG BUNN	SP08-SP07	S55	9.0	7.2	NA	9.0		-	0.0	0.0	0.0%
SHIPSIDE	MOTORROM	PLATEKLEDDNING STB SKROG BUNN	SP07-SP06	S56	9.0	7.2	NA	9.0		-	0.0	0.0	0.0%
SHIPSIDE	MOTORROM	PLATEKLEDDNING STB SKROG BUNN	SP06-SP05	S57	9.0	7.2	NA	9.5		-	0.0	0.0	0.0%
SHIPSIDE	MOTORROM	PLATEKLEDDNING STB SKROG BUNN	SP05-SP04	S58	9.0	7.2	NA	9.0		-	0.0	0.0	0.0%
SHIPSIDE	MOTORROM	PLATEKLEDDNING STB SKROG BUNN	SP04-SP03	S59	9.0	7.2	NA	9.0		-	0.0	0.0	0.0%
SHIPSIDE	MOTORROM	PLATEKLEDDNING STB SKROG BUNN	SP03-SP02	S60	11.0	8.8	NA	11.0		-	0.0	0.0	0.0%
SHIPSIDE	STYREMASKIN	PLATEKLEDDNING STB SKROGSSIDE	SP02-SP01	S61	5.0	4.0	5.0	5.1	0.0	0.0%	0.0	0.0	0.0%
SHIPSIDE	STYREMASKIN	PLATEKLEDDNING STB SKROGSSIDE	SP01-SP0	S62	5.0	4.0	5.0	5.2	0.0	0.0%	0.0	0.0	0.0%
SHIPSIDE	STYREMASKIN	PLATEKLEDDNING STB SKROG BUNN	SP02-SP01	S63	11.0	8.8	NA	11.0		-	0.0	0.0	0.0%
SHIPSIDE	STYREMASKIN	PLATEKLEDDNING STB SKROG BUNN	SP01-SP0	S64	11.0	8.8	NA	11.0		-	0.0	0.0	0.0%
SHIPSIDE	FORRPIGG	PLATEKLEDDNING BB SKROGSSIDE	SP32-SP31	S65	5.0	4.0	6.0	6.3	0.0	0.0%	0.0	0.0	0.0%
SHIPSIDE	FORRPIGG	PLATEKLEDDNING BB SKROGSSIDE	SP31-SP30	S66	5.0	4.0	6.0	6.0	0.0	0.0%	0.0	0.0	0.0%
SHIPSIDE	FORRPIGG	PLATEKLEDDNING BB SKROGSSIDE	SP30-SP29	S67	5.0	4.0	6.3	6.2	0.0	0.0%	0.0	0.0	0.0%
SHIPSIDE	FORRPIGG	PLATEKLEDDNING BB SKROGSSIDE	SP29-SP28	S68	5.0	4.0	6.0	6.1	0.0	0.0%	0.0	0.0	0.0%
SHIPSIDE	FORRPIGG	PLATEKLEDDNING BB SKROG BUNN	SP32-SP31	S69	6.0	4.8	NA	6.0		-	0.0	0.0	0.0%
SHIPSIDE	FORRPIGG	PLATEKLEDDNING BB SKROG BUNN	SP31-SP30	S70	6.0	4.8	NA	6.0		-	0.0	0.0	0.0%
SHIPSIDE	FORRPIGG	PLATEKLEDDNING BB SKROG BUNN	SP30-SP29	S71	6.0	4.8	NA	6.2		-	0.0	0.0	0.0%
SHIPSIDE	FORRPIGG	PLATEKLEDDNING BB SKROG BUNN	SP29-SP28	S72	6.0	4.8	NA	6.1		-	0.0	0.0	0.0%
SHIPSIDE	ROM 2	PLATEKLEDDNING BB SKROGSSIDE	SP28-SP27	S73	5.0	4.0	6.0	5.9	0.0	0.0%	0.0	0.0	0.0%
SHIPSIDE	ROM 2	PLATEKLEDDNING BB SKROGSSIDE	SP27-SP26	S74	5.0	4.0	5.9	6.0	0.0	0.0%	0.0	0.0	0.0%
SHIPSIDE	ROM 2	PLATEKLEDDNING BB SKROGSSIDE	SP26-SP25	S75	5.0	4.0	6.2	6.1	0.0	0.0%	0.0	0.0	0.0%
SHIPSIDE	ROM 2	PLATEKLEDDNING BB SKROGSSIDE	SP25-SP24	S76	5.0	4.0	6.0	6.0	0.0	0.0%	0.0	0.0	0.0%
SHIPSIDE	ROM 2	PLATEKLEDDNING BB SKROGSSIDE	SP24-SP23	S77	5.0	4.0	6.0	6.0	0.0	0.0%	0.0	0.0	0.0%
SHIPSIDE	ROM 2	PLATEKLEDDNING BB SKROG BUNN	SP28-SP27	S78	6.0	4.8	NA	6.1		-	0.0	0.0	0.0%
SHIPSIDE	ROM 2	PLATEKLEDDNING BB SKROG BUNN	SP27-SP26	S79	6.0	4.8	NA	6.1		-	0.0	0.0	0.0%
SHIPSIDE	ROM 2	PLATEKLEDDNING BB SKROG BUNN	SP26-SP25	S80	6.0	4.8	NA	6.0		-	0.0	0.0	0.0%
SHIPSIDE	ROM 2	PLATEKLEDDNING BB SKROG BUNN	SP25-SP24	S81	6.0	4.8	NA	5.9		-	0.0	0.1	1.7%
SHIPSIDE	ROM 2	PLATEKLEDDNING BB SKROG BUNN	SP24-SP23	S82	6.0	4.0	NA	6.3		-	0.0	0.0	0.0%
SHIPSIDE	ROM 3	PLATEKLEDDNING BB SKROGSSIDE	SP23-SP22	S83	5.0	4.0	5.2	5.6	0.0	0.0%	0.0	0.0	0.0%
SHIPSIDE	ROM 3	PLATEKLEDDNING BB SKROGSSIDE	SP22-SP21	S84	5.0	4.0	5.6	5.6	0.0	0.0%	0.0	0.0	0.0%
SHIPSIDE	ROM 3	PLATEKLEDDNING BB SKROGSSIDE	SP21-SP20	S85	5.0	4.0	5.5	5.2	0.0	0.0%	0.0	0.0	0.0%
SHIPSIDE	ROM 3	PLATEKLEDDNING BB SKROGSSIDE	SP20-SP19	S86	5.0	4.0	5.6	5.3	0.0	0.0%	0.0	0.0	0.0%
SHIPSIDE	ROM 3	PLATEKLEDDNING BB SKROGSSIDE	SP19-SP18	S87	5.0	4.0	5.5	5.4	0.0	0.0%	0.0	0.0	0.0%
SHIPSIDE	ROM 3	PLATEKLEDDNING BB SKROG BUNN	SP23-SP22	S88	6.0	4.8	NA	6.1		-	0.0	0.0	0.0%
SHIPSIDE	ROM 3	PLATEKLEDDNING BB SKROG BUNN	SP22-SP21	S89	6.0	4.8	NA	6.0		-	0.0	0.0	0.0%
SHIPSIDE	ROM 3	PLATEKLEDDNING BB SKROG BUNN	SP21-SP20	S90	6.0	4.8	NA	6.0		-	0.0	0.0	0.0%
SHIPSIDE	ROM 3	PLATEKLEDDNING BB SKROG BUNN	SP20-SP19	S91	6.0	4.8	NA	6.0		-	0.0	0.0	0.0%
SHIPSIDE	ROM 3	PLATEKLEDDNING BB SKROG BUNN	SP19-SP18	S92	6.0	4.8	NA	5.2		-	0.8	13.3%	
SHIPSIDE	ROM 4	PLATEKLEDDNING BB SKROGSSIDE	SP18-SP17	S93	5.0	4.0	5.0	6.0	0.0	0.0%	0.0	0.0	0.0%
SHIPSIDE	ROM 4	PLATEKLEDDNING BB SKROGSSIDE	SP17-SP16	S94	5.0	4.0	5.5	6.0	0.0	0.0%	0.0	0.0	0.0%
SHIPSIDE	ROM 4	PLATEKLEDDNING BB SKROGSSIDE	SP16-SP15	S95	5.0	4.0	5.0	4.9	0.0	0.0%	0.1	2.0%	

Robert Myrnes

Inner deck

