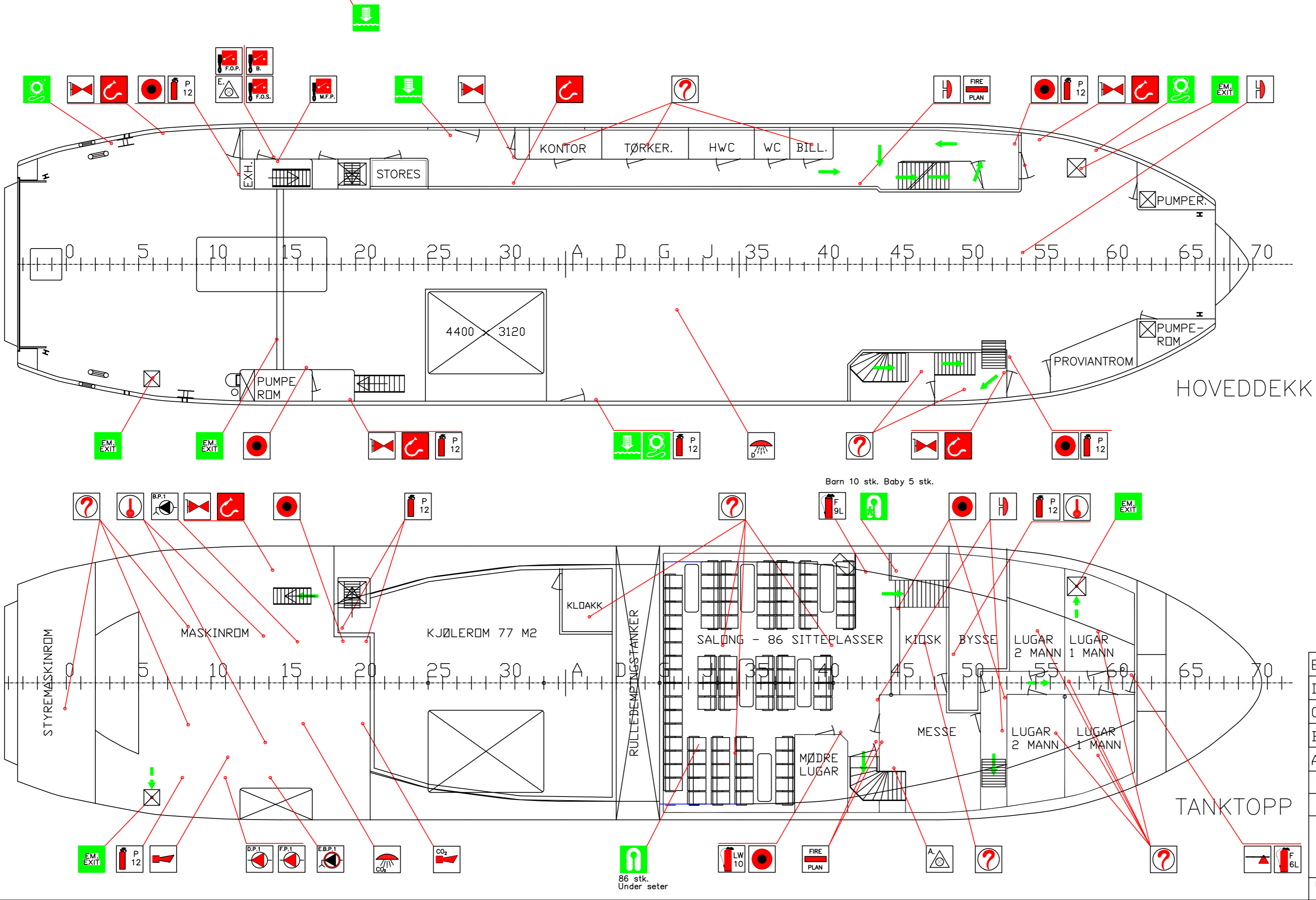
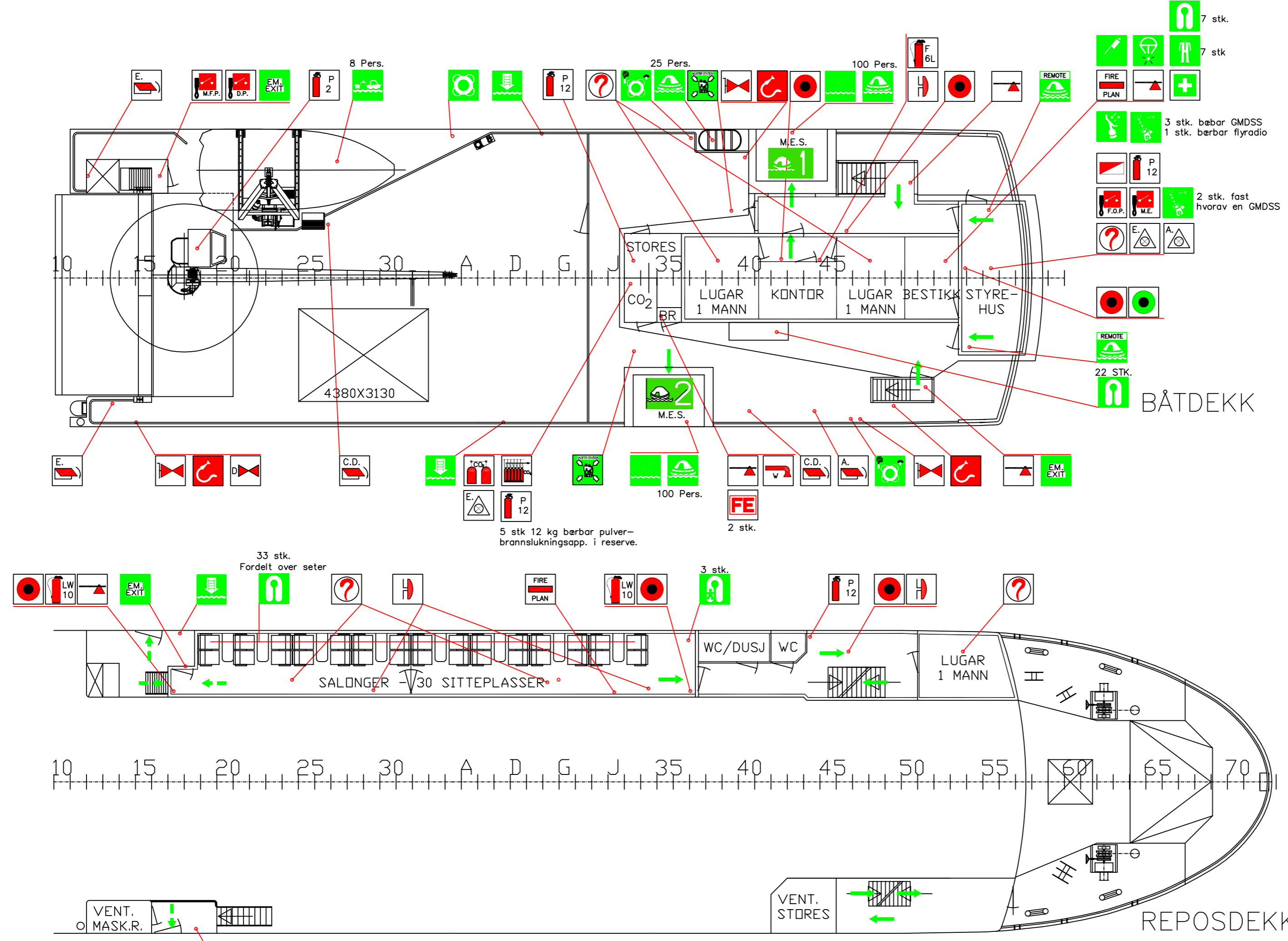
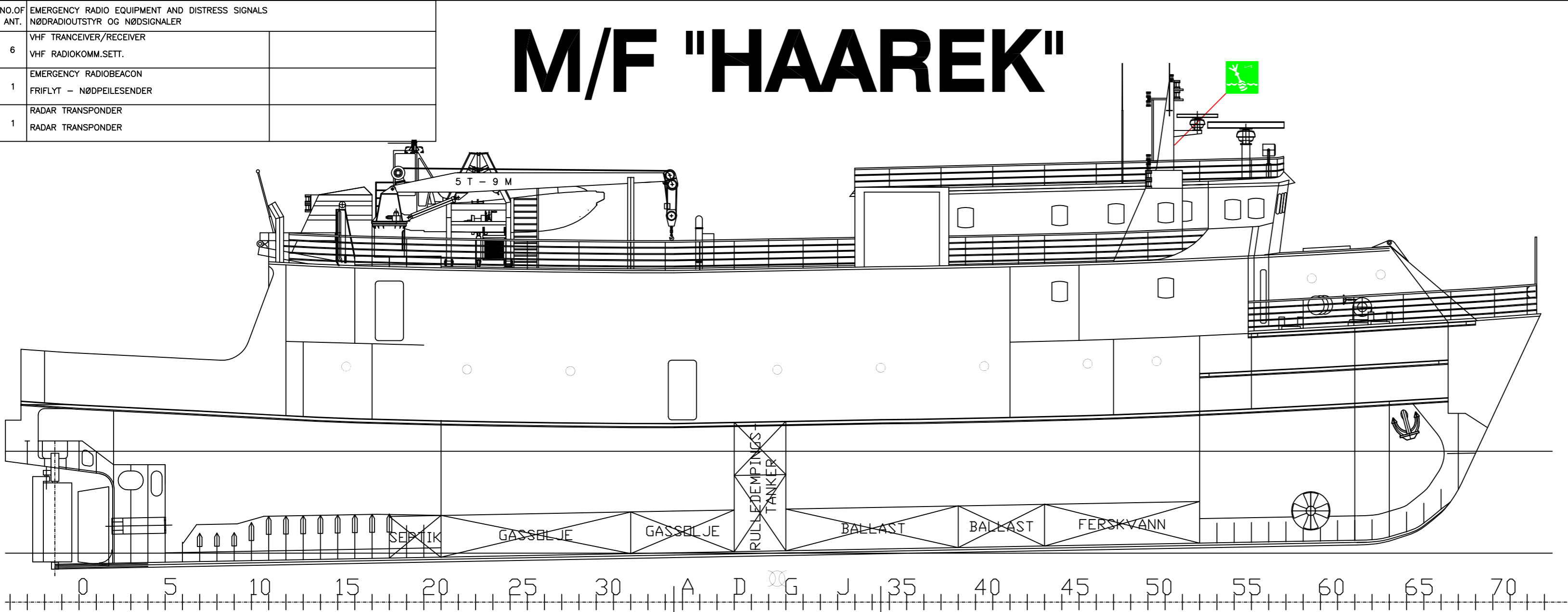


# M/F "HAAREK"



SYMBOL	NO. OF ANT.	EMERGENCY RADIO EQUIPMENT AND DISTRESS SIGNALS	
[Symbol]	6	VHF TRANSEIVER/RECEIVER	
[Symbol]	1	VHF RADIOKOMM.SETT	
[Symbol]	1	EMERGENCY RADIOBEACON	
[Symbol]	1	FRIFLYT - NØDPELESENDE	
[Symbol]	1	RADAR TRANSPONDER	
[Symbol]	12	ROCKET PARACHUTE FLARE	
[Symbol]	2	FALLSKJERMFLYS	
[Symbol]	2	LIFE SAVING EQUIPMENT	
[Symbol]	2	LIVREDDINGSUTSTR	
[Symbol]	2	EVAKUERINGSBANE	
[Symbol]	2	EVAKUERINGSBANE	
[Symbol]	1	MOB-BÅT	CAP. 6 PERSONS
[Symbol]	1	MANN-OVERBOARD-BÅT	KAP. 6 PERSONER
[Symbol]	6	EMBARCATION LADDER	
[Symbol]	6	BORDINGSLEIDER	
[Symbol]	3	LIFE RAFTS	CAP. 2 x 100, 1 x 25 pers.
[Symbol]	3	REDDINGSFLÅTER	KAPASITET 2 x 100, 1 x 25 pers.
[Symbol]	1	LIFEBΟΥY	
[Symbol]	1	LIFEBΟΥY WITH LIGHT AND SMOKE	
[Symbol]	2	LIFEBΟΥY WITH LINE	
[Symbol]	2	LIFEBΟΥY WITH LINE	
[Symbol]	1	LIFEBΟΥY WITH LIGHT AND LINE	
[Symbol]	1	LIFEBΟΥY WITH LINE	
[Symbol]	18	CHILD'S LIFE JACKET INKLUDERT 5 BABIES	
[Symbol]	18	LIFE JACKET	FOR PASSENGERS AND CREW
[Symbol]	148	REDDINGSVEST	FOR PASSENGERER OG MANNKAP
[Symbol]	7	SURVIVAL SUITS	
[Symbol]	7	OVERLEVESEDRÅKT	
[Symbol]	1	FIRST AID EQUIPMENT	
[Symbol]	1	FØRSTEHJELPSUTSTR	
[Symbol]	1	EMERGENCY EXIT	
[Symbol]	1	NØDUTGANG	
[Symbol]	1	PRIMARY MEANS OF ESCAPE	
[Symbol]	1	HOVEDRETNING VED EVAKUERING	
[Symbol]	1	SECONDARY MEANS OF ESCAPE	
[Symbol]	1	RESERVE EVAKUERINGSRETNING	
[Symbol]	1	LINE THROWING APPLIANCE	
[Symbol]	1	LINEKASTEAPPARAT	
[Symbol]	2	MUSTER STASJON	
[Symbol]	2	MØNSTRINGSSTASJON	
[Symbol]	2	EMBARCATION STATION	
[Symbol]	2	EVAKUERINGSSTASJON	
[Symbol]	2	VENTILATION SHUT OFF	FOR EXTERIOR VENTILATION
[Symbol]	2	STENING AV VENTILASJON	FOR UTENRIS VENTILASJONSLUKE
[Symbol]	2	CLOSING APPLIANCE INLET OR OUTLET	ENGINE ROOM
[Symbol]	2	LUKKEANORDNING INNSUG/UTBLÅSING	MASKINROM
[Symbol]	3	CLOSING APPLIANCE INLET OR OUTLET	CARDECK
[Symbol]	3	LUKKEANORDNING INNSUG/UTBLÅSING	BILDEKK
[Symbol]	1	CLOSING APPLIANCE INLET OR OUTLET	ACCOMMODATION ROOM
[Symbol]	1	LUKKEANORDNING INNSUG/UTBLÅSING	INNREDNING
[Symbol]	3	EMERGENCY START/STOP	
[Symbol]	3	NØD START/STOPP	
[Symbol]	3	REMOTE STOP VENTILATION	ENGINE ROOM
[Symbol]	3	FJERNSTOPP AV VENTILASJONSANLEGG	MASKINROM
[Symbol]	2	REMOTE STOP VENTILATION	ACCOMMODATION ROOM
[Symbol]	2	FJERNSTOPP AV VENTILASJONSANLEGG	INNREDNING
[Symbol]	1	EMERG. STOP MAIN ENGINE	
[Symbol]	1	NØDSTOPP HOVEDMOTOR	
[Symbol]	2	REMOTE RELEASE EVACUATION SYSTEM	
[Symbol]	2	FJERNUTLØSNING AV EVAKUERINGSUTSTR	
[Symbol]	5	ALARM SYSTEM	
[Symbol]	5	ALARM SYSTEM	
[Symbol]	5	FIRE CONTROL PLAN	
[Symbol]	5	BRANN-/SIKKERHETSPLAN	
[Symbol]	14	PUSH BUTTON SWITCH FOR FIRE ALARM	
[Symbol]	14	TRYKK-KNAPP BRYTER FOR BRANNALARM	
[Symbol]	1	PUSH-BUTTON SWITCH GENERALALARM	
[Symbol]	1	TRYKK-KNAPP BRYTER GENERALALARM	
[Symbol]	1	FIRE ALARM PANEL	
[Symbol]	1	BRANNALARM PANEL	
[Symbol]	1	CO2 HORN	
[Symbol]	1	HORN CO2 ALARM	
[Symbol]	1	HORN FIRE ALARM	
[Symbol]	1	HORN FOR BRANNALARM	
[Symbol]	8	BELL FIRE ALARM	
[Symbol]	8	ALARMKLOKKE BRANNALARM	
[Symbol]	25	SMOKE DETECTOR	
[Symbol]	25	RØYKDETEKTOR	
[Symbol]	3	HEAT DETECTOR	
[Symbol]	3	TEMPERATUR DETEKTOR	
[Symbol]	1	SPACE PROTECTED BY DRENCHING SYSTEM	MAIN DECK
[Symbol]	1	OMRÅDE BESKYTTET MED OVERRISLINGSANLEGG	HOVEDDEKK
[Symbol]	9	FIRE FIGHTING EQUIPMENT	
[Symbol]	9	BRANNSLUKNINGSUTSTR	
[Symbol]	9	HOSE BOX WITH COMBINED JET AND FOG NOZZLE	
[Symbol]	9	BRANNSLUKSKAP M/KOMB. STRÅLERØR OG TAKESPREDER	
[Symbol]	1	FIRE MAIN WITH FIRE VALVES	
[Symbol]	1	BRANNVENTIL MED TILKOBLING FOR SLANGE	
[Symbol]	1	FIRE PUMP 1	CAPASITY - 45 M3/H - 65 BAR
[Symbol]	1	BRANNPUMPE 1	KAPASITET - 45 M3/T - 65 BAR
[Symbol]	1	PUMP FOR DRENCHING SYSTEM	CAPASITY - 52 M3/H - 65 BAR
[Symbol]	1	PUMPE FOR OVERRISLINGSANLEGG	KAPASITET - 52 M3/T - 65 BAR
[Symbol]	1	BILGE PUMP NO. 1	CAPASITY - 50 M3/H - 11 BAR
[Symbol]	1	LENSEPUMPE NR. 1	KAPASITET - 50 M3/T - 11 BAR
[Symbol]	1	EMERGENCY BILGE PUMP NO. 1	CAPASITY - 50 M3/H - 11 BAR
[Symbol]	1	NØDLENSEPUMPE NR. 1	KAPASITET - 50 M3/T - 11 BAR
[Symbol]	2	REMOTE START FIRE PUMP	
[Symbol]	2	FJERNSTART BRANNPUMPE	
[Symbol]	1	REMOTE START DRENCHING PUMP	
[Symbol]	1	FJERNSTART PUMPE FOR OVERRISLINGSANLEGG	
[Symbol]	2	REMOTE STOP FUEL OIL PUMP	
[Symbol]	2	FJERNSTOPP BRENNOLJE PUMPE	
[Symbol]	1	REMOTE CLOSING VALVES FUEL OIL SYSTEMS	
[Symbol]	1	FJERNSTENING AV VENTILER I BRENNOLJESYSTEMER	
[Symbol]	1	REMOTE STOP BOILER	
[Symbol]	1	FJERNSTOPP SENTRALKJELE	
[Symbol]	1	LOCKER WITH FIREMANS OUTFIT	
[Symbol]	1	SKAP MED BRANNMANNSUTSTR	
[Symbol]	12	PORTABLE POWDER FIRE EXTING.	Exkludert 5 pcs in stock
[Symbol]	12	BARBART PULVER BRANNSLUKNINGSAPPARAT	Exkl. 5 stk i reserve
[Symbol]	2	PORTABLE POWDER FIRE EXTINGUISHER	
[Symbol]	2	BARBART PULVER BRANNSLUKNINGSAPPARAT	
[Symbol]	3	PORTABLE LIQUID FOAM FIRE EXTING.	2 pcs 6 liter/ 1 pcs 9 liter
[Symbol]	3	BARBART SKUM BRANNSLUKNINGSAPPARAT	2 stk 6 liter/ 1 stk 9 liter
[Symbol]	3	PORTABLE WATER FIRE EXTINGUISHER	
[Symbol]	3	BARBART VANN BRANNSLUKNINGSAPPARAT	
[Symbol]	1	CO2 BATTERY	
[Symbol]	1	CO2 STASJON	
[Symbol]	1	CO2 RELEASE STATION	
[Symbol]	1	UTLØSNINGSSTASJON FOR CO2	
[Symbol]	1	SPACE PROTECTED BY CO2	
[Symbol]	1	OMRÅDE BESKYTTET MED CO2	
[Symbol]	1	SECTION VALVES DRENCHING SYSTEM	
[Symbol]	1	SEKSJONSVENTIL FOR OVERRISLINGSANLEGG	
[Symbol]	6	FIRE AXE	
[Symbol]	6	BRANNØKS	
[Symbol]	1	WATER FOG APPLICATOR	
[Symbol]	1	VANNTAKE-SPREDER	

E	13.10.05	Endringer iht. ny forskrift	H.Utvik
D	30.04.04	Redningsvester for baby	H.Utvik
C	11.06.02	Diverse justeringer	T. W.
B	07.11.01	Nytt evakueringsystem	T. W.
A	12.08.01	Redningsvester og symboler	N. F.
Bto 29.6.93		Konst./Tegnet Tracet	Målestokk
Kontroll	Standskontroll	Godkjent	HELGELANDSKE AS
M/F "HAAREK"			Erstatning for: Erstattet av:
SIKKERHETSPLAN			
Hensvisning	Beregning		