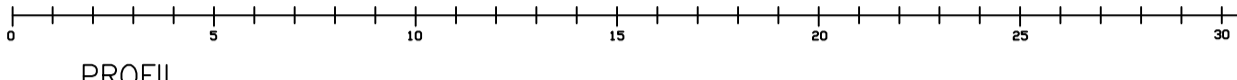
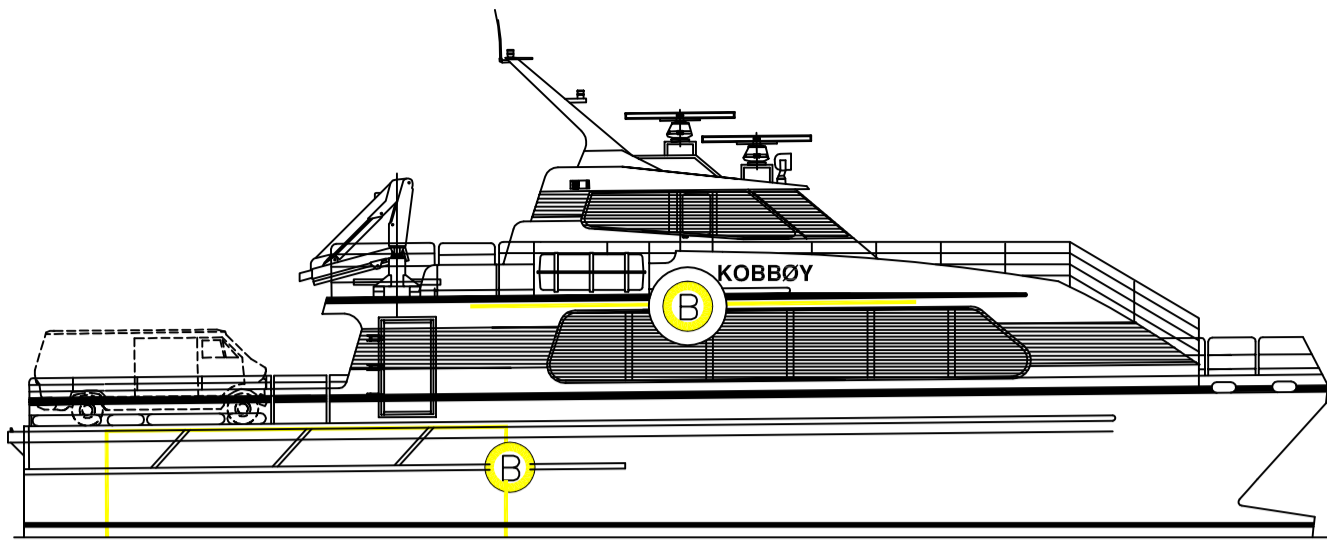
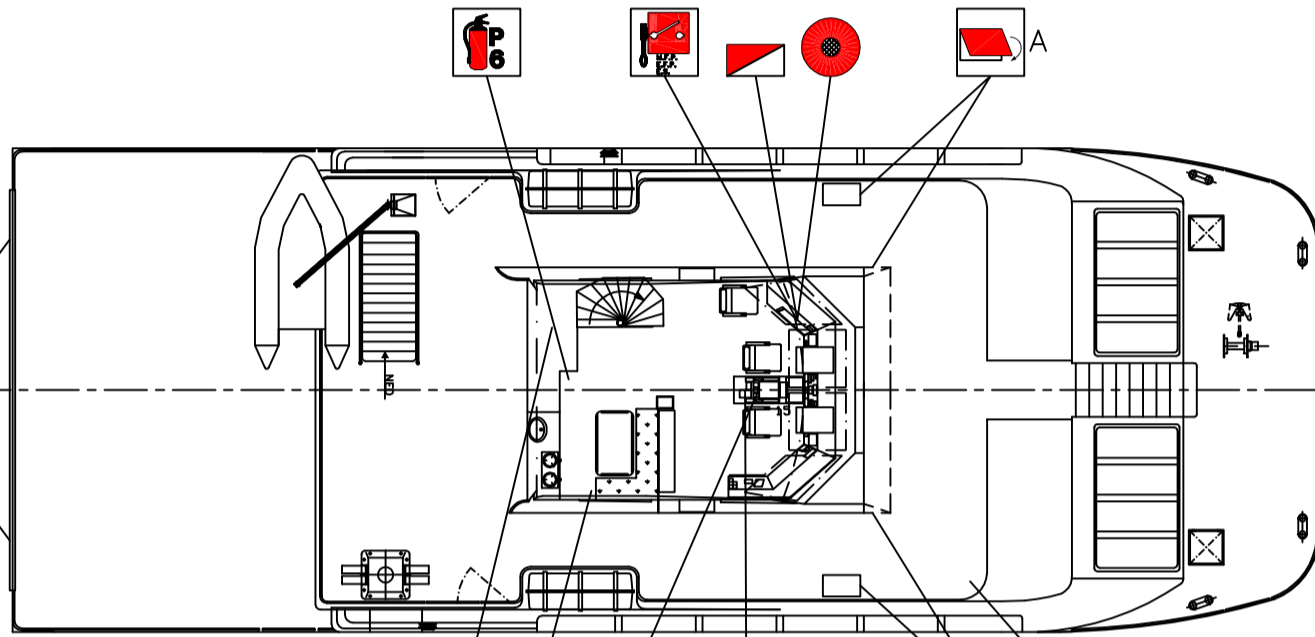


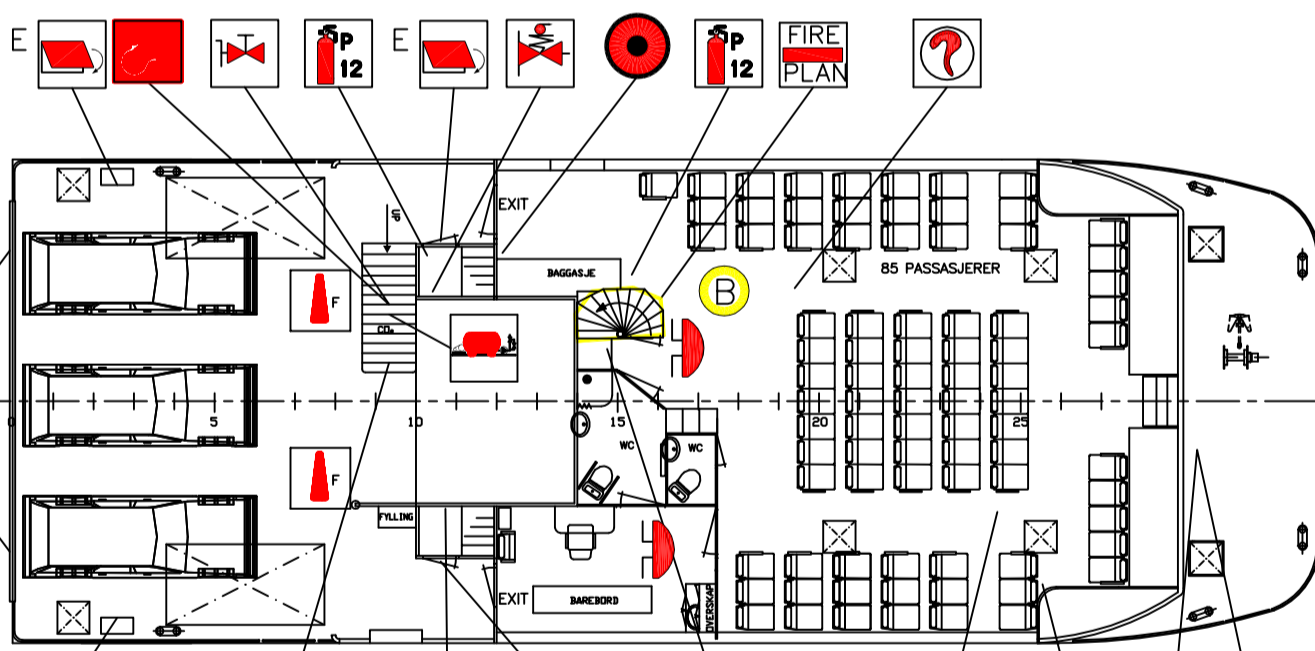
BRANNPLAN FIRE CONTROL PLAN



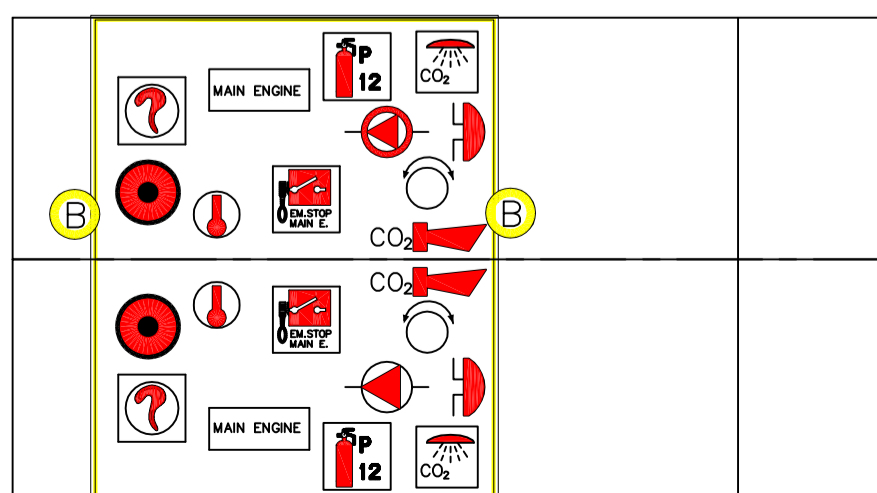
PROFIL



BRODEKK
BRIDGEDECK



HOVEDDEKK
MAINDECK



MASKINROM
ENGINE ROOM

BRANNSLOKKINGS UTSTYR FIRE FIGHTING EQUIPMENT

	2	BRANNSLANGE MED TÅKSPREDER FIRE HOSE WITH FOG NOZZLE
	1	SKUMANLEGG KAP. 28 m ³ /h FOAM INSTALLATION CAP. 28 m ³ /h
	2	SKUMDYSE FOAM NOZZLE
	1	PULVER APPARAT 6Kg POWDER EXTINGUISHER 6Kg
	5	PULVER APPARAT 12Kg POWDER EXTINGUISHER 12Kg
	1	VANN APPARAT 10L WATER EXTINGUISHER 10 L
	2	BRANN HYDRANT FIRE HYDRANT
	1	BRANN PUMPE, KAPASITET 200l/min FIRE PUMP, CAPACITY 200 l/min
	1	NØD- BRANN PUMPE, KAPASITET 200l/min EMERGENCY FIRE PUMP, CAPACITY 200 l/min
	1	BRANNMANNS UTSTYR FIREMAN'S EQUIPMENT
	1	CO2 ANLEGG CO2 STATION
	X	RESERVELADNING FOR BRANNSLOKKINGS APPARAT REFILLS FOR FIRE-FIGHTING APPARATUS
	2	OMRÅDE MED CO2 SLOKKING SPACE PROTECTED BY CO2

BRANNSIGNALER OG ALARMER FIRE SIGNALS AND ALARMS

	1	TYPHOON
	1	BRANNALARMSENTRAL FIRE ALARM CENTRAL
	2	ROTERENDE LYS, - BRANN, CO2 ALARM FLASH LAMP, - FIRE, CO2 ALARM
	4	ALARMGIVER FOR BRANN- OG LIVBÅTALARM ALARM DEVICE FOR FIRE AND LIFEBOAT ALARM
	2	ALARMGIVER - CO2 ALARM DEVICE - CO2
	3	BRANNMELDER/KNAPP FIRE ALARM PUSH-BUTTON
	1	GENERALALARMKNAPP PUSH-BUTTON FOR LIFEBOAT ALARM
	2	VARMEDETEKTOR HEAT DETECTOR
	4	RØYKDETEKTOR SMOKE DETECTOR
	1	SKIPSKLOKKE MONTERT PÅ STYREHUS SHIP'S BELL

FJERNSTYRINGSSTASJONER REMOTE CONTROL STATIONS

	3	STOPP AV HOVEDMOTOR REMOTE CONTROL OF MAIN ENGINE
	2	HURTIGSTENGER BR.OLJETANK REMOTE CLOSING OF VALVES FROM FUEL OIL TANKS
	X	NØDSTOPP VENTILASJONSVIFTER REMOTE STOP OF VENTILATION FANS
	1	START/STOPP AV BRANNPUMPER REMOTE START/STOP OF FIRE PUMPS

STENING AV VENTILASJON VENTILATION SHUT-OFF

	4	VENTILASJONSPJELD AVST. FOR INNREDNING MANUAL CLOSING OF FIRE DAMPERS FOR ACC.
	4	VENTILASJONSPJELD AVST. FOR MASK.ROM MANUAL CLOSING OF FIRE DAMPERS OFR ENG.ROOM

DIVERSE VARIOUS

	X	BRANNVERN SKOTT KLASSE B B CLASS DIVISION
	1	BRANN OG SIKKERHETSPLAN FIRE AND SAFETY PLAN

This drawing/specification is the property of Oma Baatbyggeri A/S and it must not be copied and the contents thereof or any information received in conjunction therewith must not be imparted to any unauthorized third party. It must not be used for any unauthorised purpose or used for any other project than that for which it was originally ordered. The receipt of drawing/specification implies that the conditions as mentioned are accepted.

BYGG NR. 511		GRNR.101			
Rev.	Forandring	Dato	Sign.	Project	Målestokk/Scale
A	Endr. komm. SDIR	03-07-98	IK	OMA - CAT 24250	Date: 29-05-98
B	Endr. stol ant.	30-07-98	IK		Tegn. P. K.
C	Endr. komm. SDIR	30-10-98	IK		Sjekkert
D	Endr. komm. rederi	01-03-99	IK		Avd.sjef.
E	Skumanlegg	27-10-99	IK		Plot dato: 16-10-01
F	Endr. flåter	04-07-01	IK		
G	Endr. til 2 flåter	08-09-01	IK		
H	As built	16-10-01	IK		
				Postboks 200 N-5402 STORD NORWAY	Erst.for Erst.ov
				1:100	2-5569