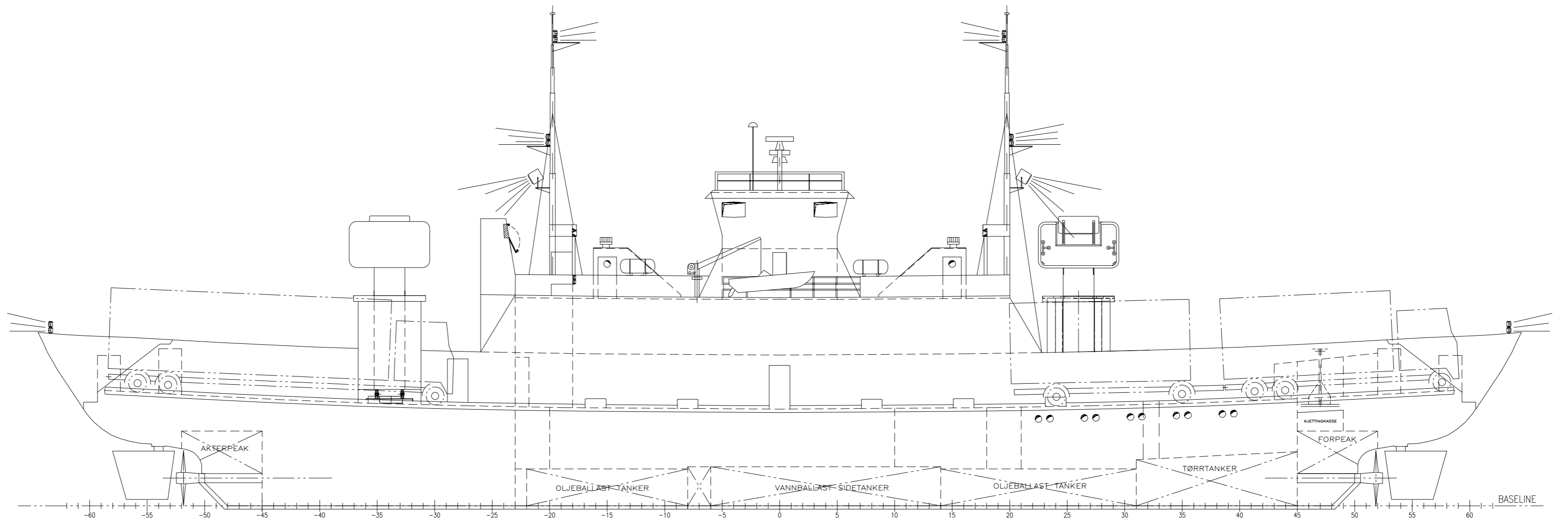


Nordnorsk Skipskonstruksjon AS PROPRIETARY. This document and its accompanying elements, contain technical data, drawings and images, which is proprietary and confidential, and protected under applicable Norwegian laws and international copyright provisions. Any disclosure, copying, distribution or use is prohibited if not otherwise explicitly agreed with Nordnorsk Skipskonstruksjon AS in writing. Any authorized reproduction, in whole or in part, must include the following legend: © 2010 Nordnorsk Skipskonstruksjon AS - All rights reserved.

FIRE CONTROL PLAN BRANNPLAN

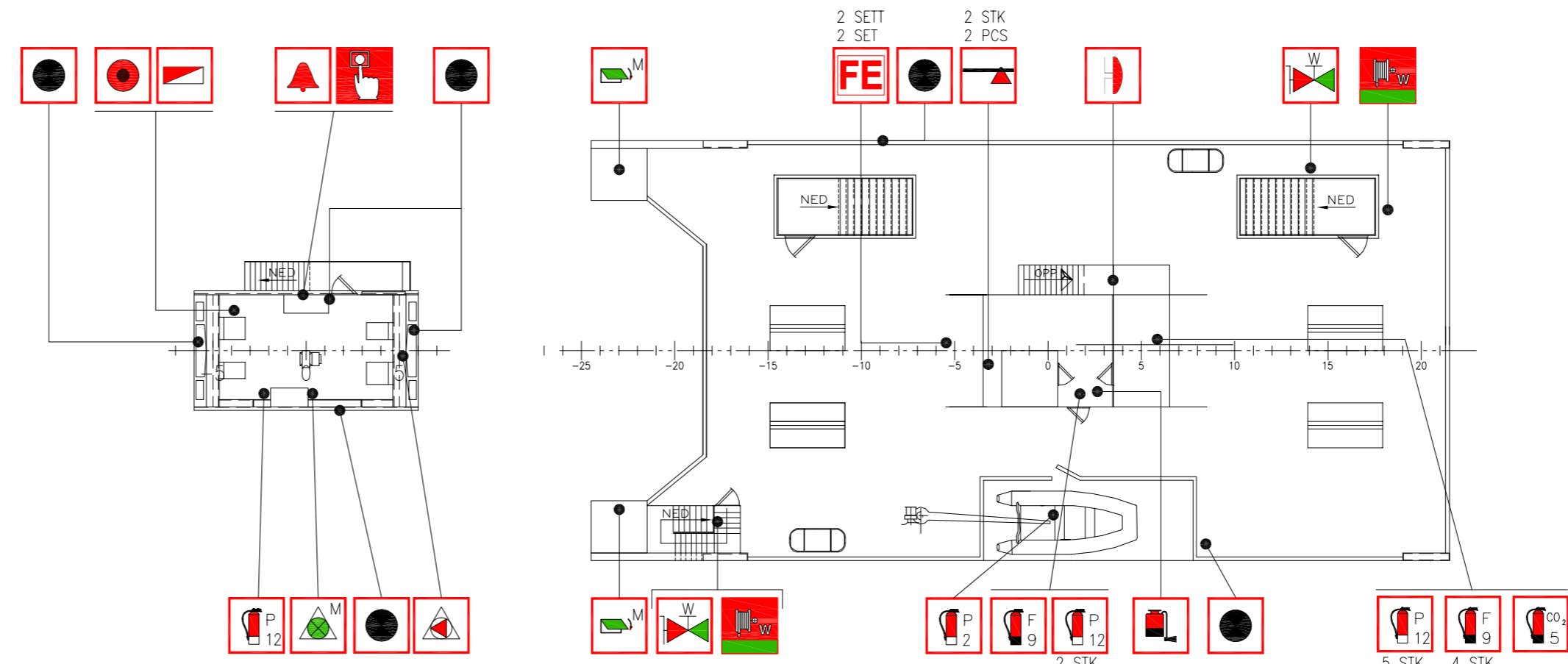
MF "ROSENDAL" - J X T H  TORGHATTEN NORD



PROFIL

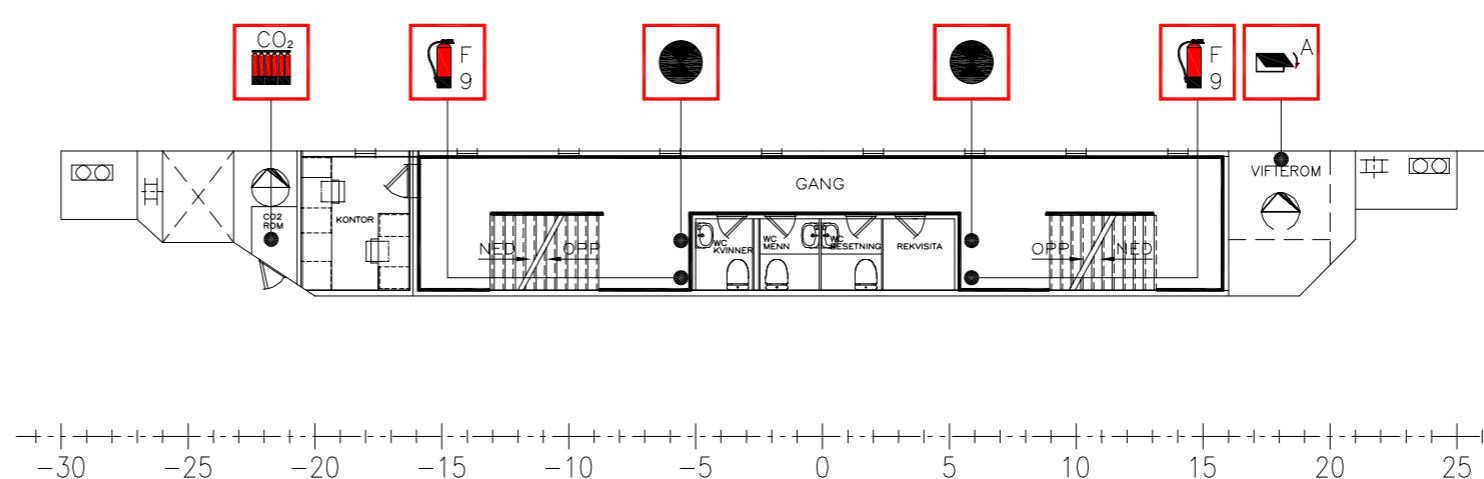
FIRE FIGHTING EQUIPMENT BRANNSLUKNINGSUTSTYR

SYMBOL	QTY	DESCRIPTION
ANT	BESKRIVELSE	
	1	PORTABLE FOAM APPLICATOR UNIT OR RELEVANT SPARE TANK(S)
	15	TRANSPORTABEL SKUMAPPLIKATOR ELLER RELEVANT RESERVETANK
	12	FIRE EXTINGUISHER FOR POWDER, 12 KG
	12	BRANNSLUKNINGSAPPARAT FOR PULVER, 12 KG
	12	FIRE EXTINGUISHER FOR FOAM - 9 LTR
	12	BRANNSLUKNINGSAPPARAT FOR SKUM - 9 LTR
	2	FIRE EXTINGUISHER FOR CO2, 5 LITERS
	2	BRANNSLUKNINGSAPPARAT FOR CO2, 5 LITERS
	1	FIRE EXTINGUISHER FOR POWDER, 2 KG- (MOB BÅT)
	1	BRANNSLUKNINGSAPPARAT FOR PULVER, 2 KG- (MOB BÅT)
	9	FIRE HOSE AND NOZZLE FOR WATER
	9	BRANNSLANGE OG DYSE FOR VANN
	11	FIRE HYDRANT WATER
	11	BRANNHYDRANT
	1	INTERNATIONAL SHORE CONNECTION
	1	INTERNASJONAL KOBLING
	1	FIXED FIRE-EXTINGUISHING BATTERY FOR CO2, 5 x 45 LITER
	1	BRANNSLUKNINGSBATTERI FOR CO2, 5 x 45 LITERS
	1	SPACE OR GROUP OF SPACE PROTECTED BY FIRE-EXTINGUISHING SYSTEM FOR CO2
	1	OMRÅDE BESKYTTET AV CO2
	1	CLASS A DIVISION
	1	BRANNSKILLE KLASSE A
	1	REMOTE CONTROL FOR FUEL OIL VALVES
	1	FJERNSTYRING FOR BRENNOLJEVENTILER
	1	REMOTE RELEASE STATION (CO2)
	1	FJERNSTYRT UTLØSERSTASJON FOR CO2
	2	REMOTE STOP FOR ENGINE ROOM VENTILATION
	2	FJERNSTOPP AV VENTILASJON FOR MASKINROM
	1	CLOSING DEVICE FOR VENTILATION INLET OR OUTLET IN ACCOMMODATION AND SERVICE SPACES
	1	LUKKEANORDNING FOR VENTILASJON I INNREDNING
	2	CLOSING DEVICE FOR VENTILATION INLET OR OUTLET IN MACHINERY SPACES
	2	LUKKEANORDNING FOR VENTILASJON I MASKINROM
	1	REMOTE CONTROL FOR FIRE PUMP(S) (WATER)
	1	FJERNSTYRING FOR BRANNPUMPE
	1	A CLASS SLIDING FIRE DOOR
	1	SKYVEBRANNDØR KLASSE A
	3	REMOTE CONTROL FOR WATERTIGHT DOORS OR FIRE DOORS
	3	FJERNSTYRING VANNTETT DØR ELLER BRANNDØR
	1	FIREMANS OUTFIT, 2 SETT
	1	BRANNMANNUTSTYR, 2 SETT
	5	FIRE AXE
	5	BRANNØKS
	1	GENERAL ALARM
	1	GENERAL ALARM
	6	FIRE ALARM BELL
	6	BRANNALARM KLOKKE
	1	CO2 HORN
	1	HORN CO2 ALARM
	1	SHIP'S BELL
	1	SKIPSKLOKKE
	2	FIRE PUMP 23m³/t v/60mvs
	2	BRANNPUMPE 23m³/t v/60mvs
	1	BILGE PUMP
	1	LENSEPUMPE
	1	EMERGENCY BILGE PUMP
	1	NØDLENSEPUMPE
	1	SPACE OR GROUP OF SPACE MONITORED BY HEAT DETECTOR(S)
	1	OMRÅDE ØVERVÅKET AV VARMEDETEKTOR
	18	SPACE MONITORED BY SMOKE DETECTOR
	18	OMRÅDE ØVERVÅKET AV RØKDETEKTOR
	1	FIRE ALARM CENTRAL
	1	BRANNALARM SENTRAL
	4	MANUALLY OPERATED CALL POINT
	4	MANUELL BRANNMELDER
	5	FIRE PROTECTION APPLIANCES OR STRUCTURAL FIRE PROTECTION PLAN
	5	BRANNSPLAN
	28	EMERGENCY LIGHT
	28	NØDLYS
	2	PRIMARY ESCAPE ROUTE
	2	HOVEDRØMNINGSVEI
	2	SECONDARY ESCAPE ROUTE
	2	ALTERNATIV RØMNINGSVEI

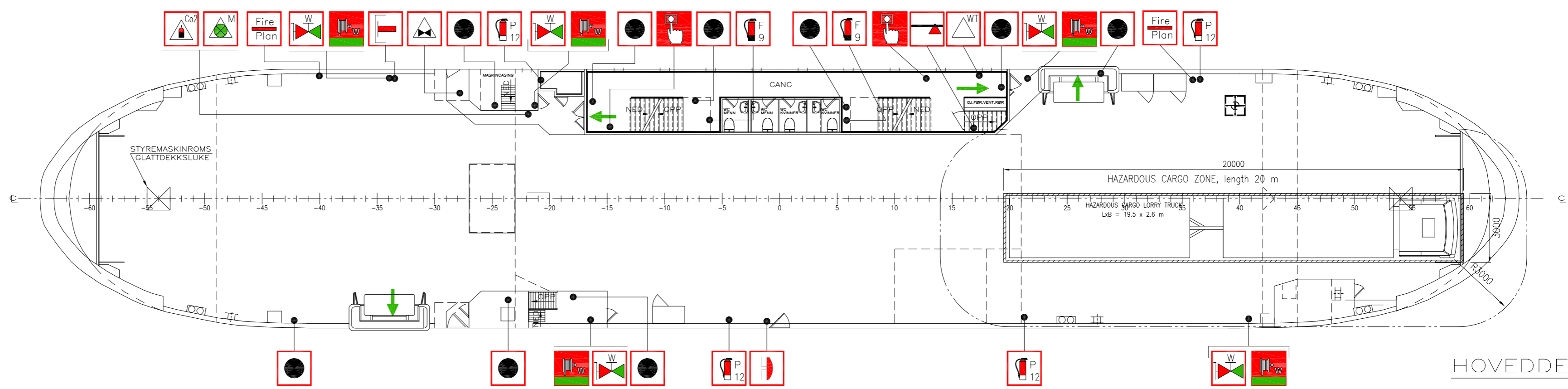


STYREHUS

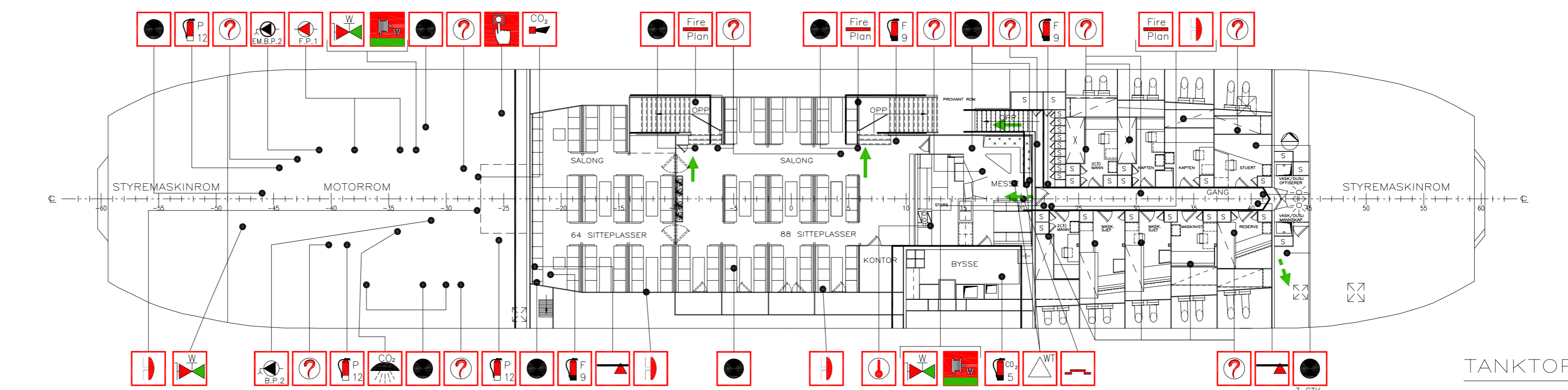
BRODEKK



REPODEKK



HOVEDDEKK



TANKTOPP

SYMBOL	QTY	DESCRIPTION
ANT	BESKRIVELSE	
	2	BREATHING EQUIPMENT
	2	RØYKDYKKERUTSTYR
	4	SPARE AIRBOTTLES
	4	RESERVEFLASKER LUFT
	2	SAFETY LIGHT
	2	SIKKERHETSLAMPE
	2	SAFETY ROPE
	2	SIKKERHETSLINE
	2	SAFETY BELT
	2	SIKKERHETSBELTE
	2	FIRE AXE
	2	BRANNØKS
	2	PROTECTIVE SUIT
	2	BESKYTTELSESDRAKT
	2	PROTECTIVE BOOTS
	2	VERNESTØVLER
	2	PROTECTIVE GLOVES
	2	VERNEHANSKER
	2	FIRE HELMET
	2	BRANNHJELM

MAIN DIMENSIONS

LENGTH:	57.12 m
MAX. LENGTH:	64.49 m
BREADTH:	11.25 m
DEPTH:	4.2 m

C	ISSUED FOR NMA APPROVAL	2022-03-21 / VSO
A	UPDATED WITH NEW SETS OF FIRE EXTINGUISHERS, ISSUED FOR OWNER COMMENTS	2022-02-22 / EH
Rev.	Description:	Date/Sign:
Date:	17.10.2016	Constr./Drawn: NSK
Scale:	1:150	Contr.: EH
Approved:		Approved: VSO
Reference:	MF ROSENDAL - J X T H FIRE CONTROL PLAN BRANNPLAN	
www.nskshipdesign.com		Sheet no: 1 of 1
6249-500-001_C		Replacement for: 3900-500-001_C4, dato 16.11.2016