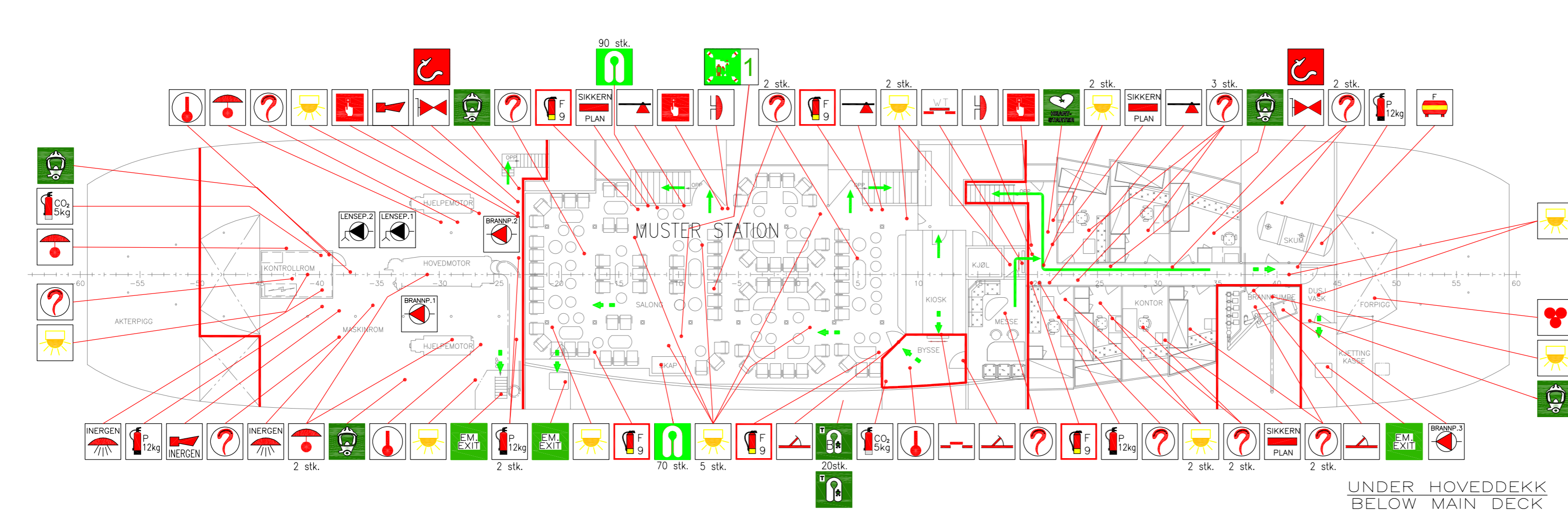
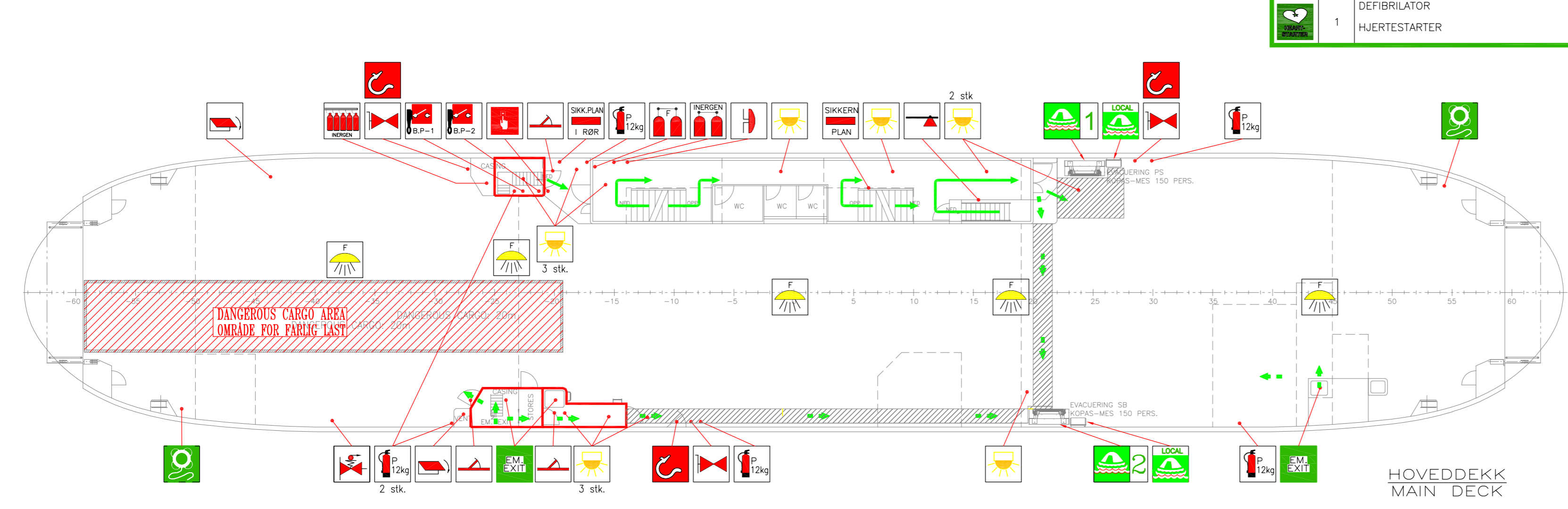
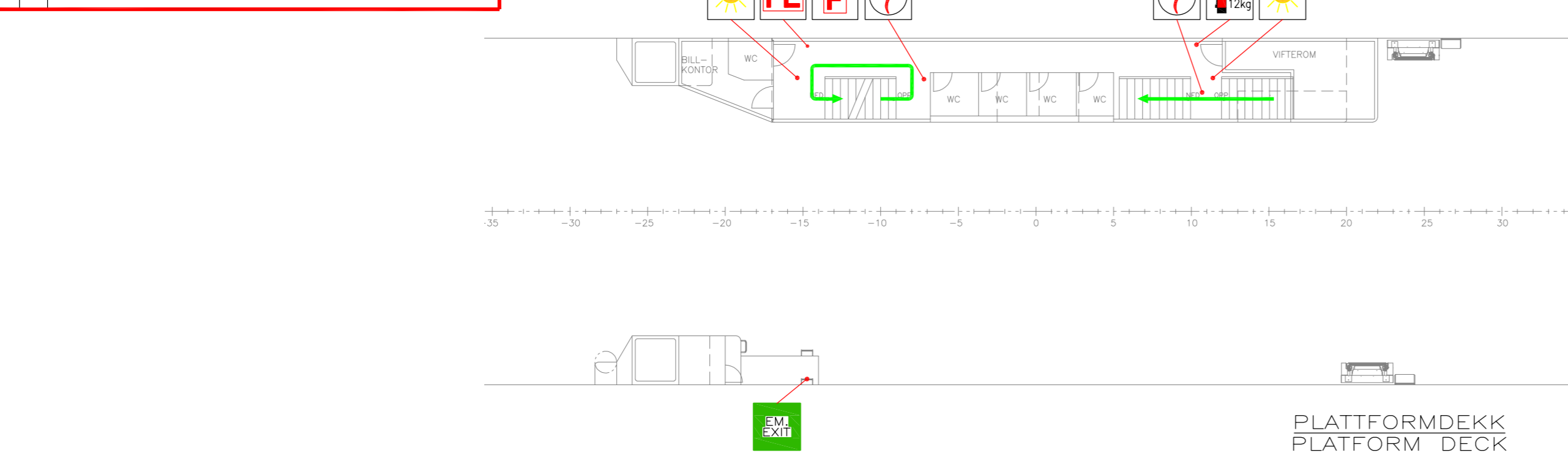
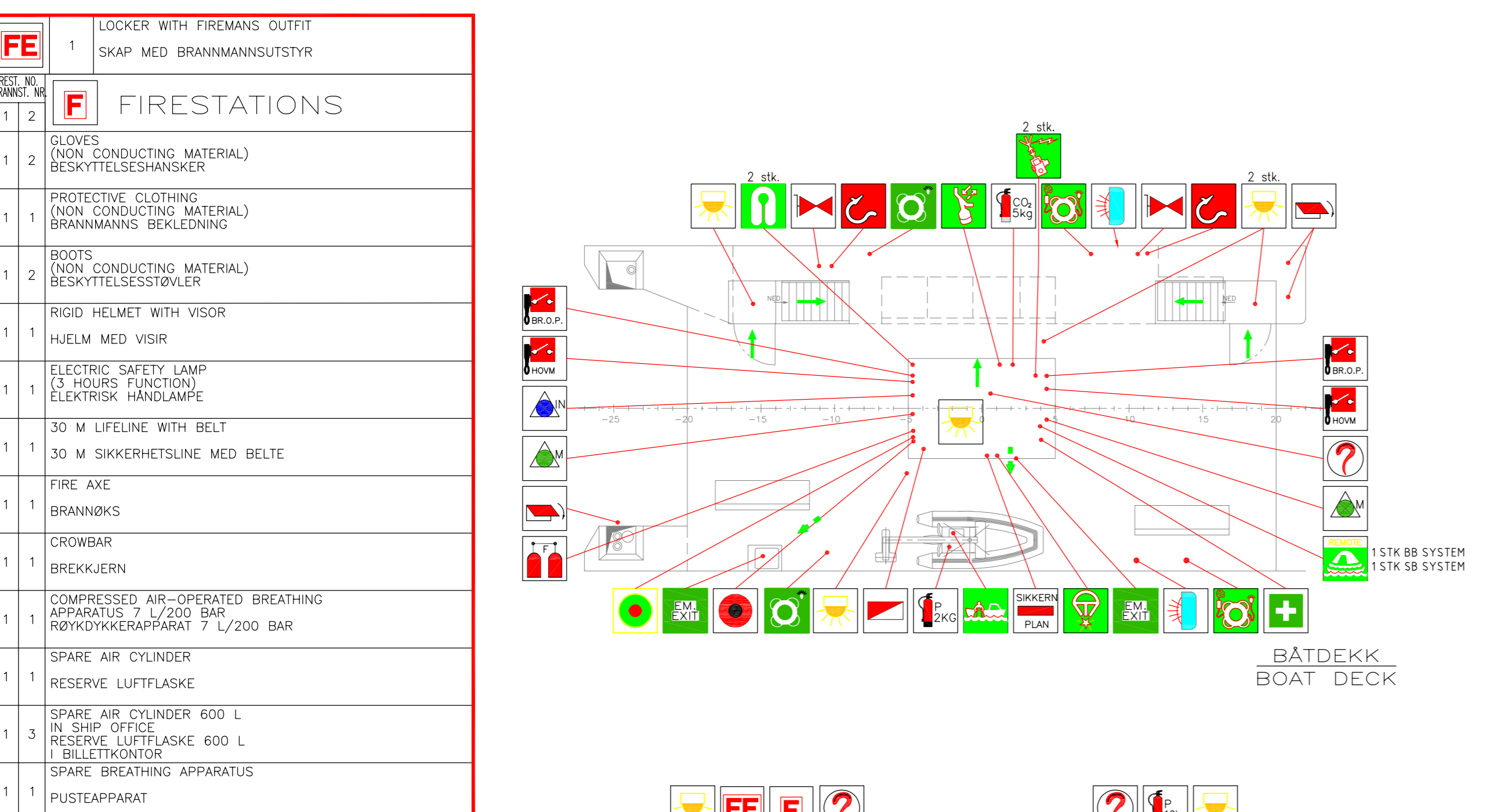
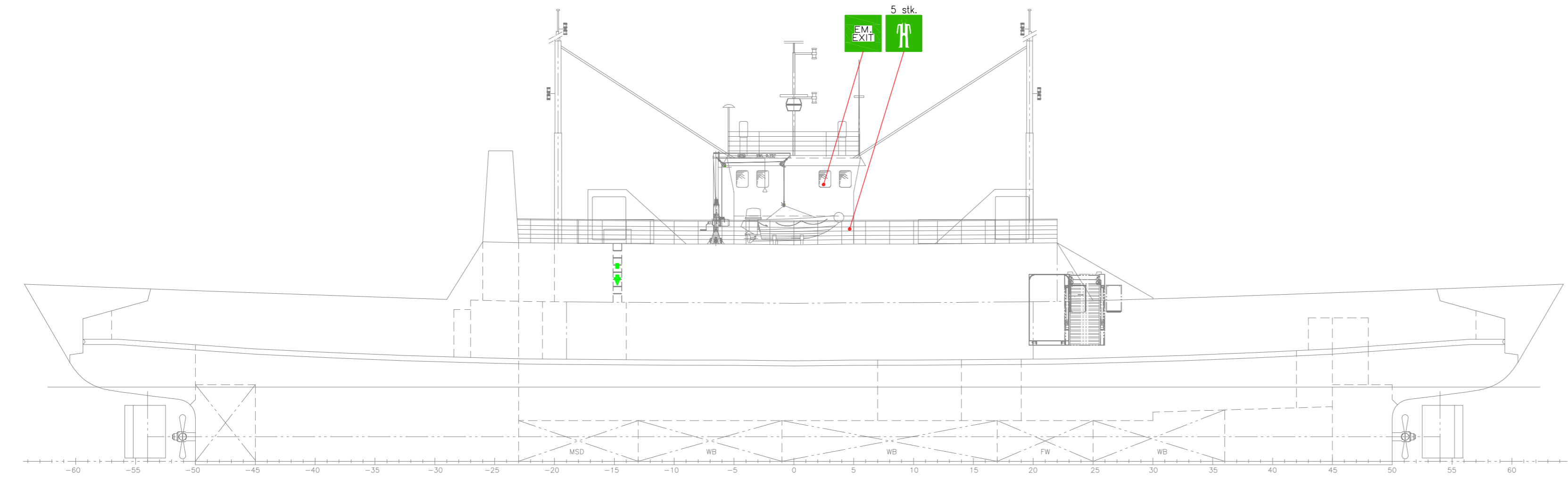


M/F "BJARKØY" - L I I J BRANN OG SIKKERHETSPLAN

NSK Ship Design PROTECTED: This document and its accompanying elements contain technical data, drawings and/or images, which are proprietary and confidential, and provided under applicable Norwegian laws and international copyright provisions. All trademarks, copying, distribution or use is prohibited if not otherwise explicitly agreed with NSK Ship Design in writing. Any authorized reproduction, in whole or in part, must include the following legend:

FE	1	LOCKER WITH FIREMANS OUTFIT SKAP MED BRANNMANNSUTSTYR
F	1	FIRESTATIONS
1	2	GLOVES (NON CONDUCTING MATERIAL) BESKYTTELSESHANSKER
1	2	PROTECTIVE CLOTHING (NON CONDUCTING MATERIAL) BRANNMANNS BEKLEDNING
1	2	BOOTS (NON CONDUCTING MATERIAL) BESKYTTELSESTØVLER
1	1	RIGID HELMET WITH VISOR HJELM MED VISIR
1	1	ELECTRIC SAFETY LAMP (3 HOURS FUNCTION) ELEKTRISK HÅNDLAMPE
1	1	30 M LIFELINE WITH BELT 30 M SIKKERHETSLINE MED BELTE
1	1	FIRE AXE BRANNØKS
1	1	CROWBAR BREKKJERN
1	1	COMPRESSED AIR-OPERATED BREATHING APPARATUS 7 L/200 BAR RØYKDYKKERAPPARAT 7 L/200 BAR
1	1	SPARE AIR CYLINDER RESERVE LUFTFLASKE
1	3	SPARE AIR CYLINDER 600 L IN SHIP OFFICE RESERVE LUFTFLASKE 600 L I BILLETTKONTOR
1	1	SPARE BREATHING APPARATUS PUSTEAPPARAT



LIFE-SAVING EQUIPMENT LIVREDNINGSUTSTYR

SYMBOL	N.O.S ANTALL	DESCRIPTION BESKRIVELSE
[Symbol]	2	KOPAS MES SYSTEM/LIFE RAFTS: 150 PERSONS EACH KOPAS MES SYSTEM/REDNINGSFLÅTER: 150 PERSONER HVER
[Symbol]	2	2 STK. REMOTE RELEASE OF MES SYSTEM 2 PCS. LOKALUTLØSER FOR KOPAS MES SYSTEM
[Symbol]	2	2 PCS. LOCAL RELEASE OF MES SYSTEM
[Symbol]	2	STRETCHER 2 STK. FJERNUTLØSER FOR KOPAS MES SYSTEM MUSTER STASJON
[Symbol]	1	MØNSTRINGSSTASJON
[Symbol]	162	LIFE JACKETS W/THERMAL PROTECTION REDNINGSVESTER M/TERMISK BESKYTTELSE
[Symbol]	20	CHILD'S THERMAL LIFE JACKET TERMISK REDNINGSVEST BARN
[Symbol]	4	BABY'S THERMAL LIFE JACKET TERMISK REDNINGSVEST BABY
[Symbol]	5	IMMERSION SUITS IN TRUNK UNDER WHEEL HOUSE REDNINGSDRAKTER I TRUNK UNDER RORHUS
[Symbol]	2	LIFEBUOY WITH LINE LIVBØYE MED LINE
[Symbol]	2	LIFEBUOY WITH LIGHT LIVBØYE MED LYS
[Symbol]	2	LIFEBUOY WITH LIGHT AND SMOKE LIVBØYE MED LYS OG RØYK
[Symbol]	1	RESCUE BOAT, CAPASITY 6 PERSONS REDNINGSBET, KAPASITET 6 PERSONER
[Symbol]	1	RADAR TRANSPONDER
[Symbol]	1	2 STK. VHF-TRANSEIVER/RECEIVER 2 PCS. VHF - RADIO KOMM.SETT
[Symbol]	3	ROCKET PARACHUTE FLARES FALLSKJERMFLYS
[Symbol]	1	MEDICAL KIT FØRSTEHJELPSUTSTYR
[Symbol]	4	EMERGENCY ESCAPE BREATHING DEVICE (EEBD) FLUKTMASKE
[Symbol]	1	DEFIBRILATOR HJERTESTARTER

FIRE-FIGHTING EQUIPMENT BRANNVERNUTSTYR

SYMBOL	N.O.S ANTALL	DESCRIPTION BESKRIVELSE
[Symbol]	5	FIRE CONTROL AND SAFETY PLAN BRANN OG SIKKERHETSPLAN
[Symbol]	1	FIRE CONTROL AND SAFETY PLAN BRANN OG SIKKERHETSPLAN I RØR
[Symbol]	1	FIRE ALARM PANEL BRANNALARMANDEL
[Symbol]	1	UTLØSERSKAP FOR INERGEN
[Symbol]	2	SPACE PROTECTED BY INERGEN OMRÅDE BESKYTTET MED INERGEN
[Symbol]	1	INERGEN HORN INERGEN ALARM-HORN
[Symbol]	1	BATTERY FOR INERGEN SPRINKLER FLASKESTASJON FOR INERGEN BRANNSLUKNINGSANL.
[Symbol]	4	INERGENDYSER
[Symbol]	1	FIRE PUMP - 1 CAPACITY: 45 M ³ /H - 6 BAR BRANNPUMPE - 1 KAPASITET: 45 M ³ /T - 6 BAR
[Symbol]	1	FIRE / GEN SERV PUMP - 2 CAPACITY: 45 M ³ /H - 6 BAR BRANN / SPYLE PUMPE - 2 KAPASITET: 45 M ³ /T - 6 BAR
[Symbol]	1	FIRE PUMP - 3 (Foompump) CAPACITY: 220 M ³ /H - 12 BAR BRANNPUMPE - 3 (skumpumpe) KAPASITET: 220 M ³ /T - 12 BAR
[Symbol]	1	BILGE PUMP - 1 CAPACITY: 45 M ³ /H - 4,5 BAR LENSEPUMPE KAPASITET: 45 M ³ /T - 4,5 BAR
[Symbol]	1	BILGE PUMP - 2 CAPACITY: 27 M ³ /H - 4,5 BAR LENSEPUMPE KAPASITET: 27 M ³ /T - 4,5 BAR
[Symbol]	1	REMOTE START FIRE PUMP - 1 FJERNSTART BRANNPUMPE - 1
[Symbol]	1	REMOTE START FIRE PUMP - 2 FJERNSTART BRANNPUMPE - 2
[Symbol]	2	REMOTE SWITCH FUEL OIL PUMP FJERNSTOPP BRENNOLJEPUMPE
[Symbol]	2	REMOTE SWITCH MAIN ENGINE FJERNSTOPP HOVEDMOTOR
[Symbol]	2	FOAM RELEASE STATION UTLØSNINGSSTASJON FOR SKUM
[Symbol]	2	VENTILATION REMOTE SHUT-OFF FOR MACHINERY SPACES FJERNSTOPP MASKINROMSVIFTE
[Symbol]	1	VENTILATION REMOTE SHUT-OFF FOR ACCOMMODATION AND SERVICE SPACES FJERNSTOPP INNREDNINGSVIFTE
[Symbol]	1	REMOTE CONTROLLED FUEL VALVES FJERNSTENING BRENNOLJEVENTILER
[Symbol]	4	MANUALLY OPERATED CALL POINT MANUELL BRANNWELDER
[Symbol]	3	BELL FIRE ALARM ALARMKLOKKE BRANNALARM
[Symbol]	7	FIRE MAIN WITH FIRE VALVES BRANNVENTIL MED TILKOBLING FOR SLANGE
[Symbol]	7	FIRE HOSE BRANNSLANGE MED M/KOMB. STRÅLERØR OG TÅKESPREDER
[Symbol]	5	FIRE EXTINGUISHER FOR FOAM BRANNSLOKNINGSAPPARAT FOR SKUM
[Symbol]	12	PORTABLE POWDER FIRE EXTINGUISHER, 12 kg BRANNSLOKNINGSAPPARAT FOR PULVER
[Symbol]	2	PORTABLE POWDER FIRE EXTINGUISHER, 2 kg BRANNSLOKNINGSAPPARAT FOR PULVER
[Symbol]	3	FIRE EXTINGUISHER FOR CO2 BRANNSLOKNINGSAPPARAT FOR CO2
[Symbol]	1	FOAM INSTALLATION SKUMANLEGG
[Symbol]	5	SPACE OR GROUP OF SPACE PROTECTED BY FIRE- EXTINGUISHING FOAM SYSTEM OMRÅDE BESKYTTET AV SKUM
[Symbol]	1	REFILLS FOR FIRE-EXTINGUISHERS RESERVEVLADNINGER FOR BRANNSLUKNINGS-APPARAT 1 STK. FOR HVER TYPE APPARAT.
[Symbol]	4	FIRE AXE BRANNØKS
[Symbol]	20	SMOKE DETECTOR RØYKVARSLER
[Symbol]	4	HEAT DETECTOR VARMEDETEKTOR
[Symbol]	1	HORN FIRE ALARM HORN FOR BRANNALARM
[Symbol]	5	CLOSING DEVICE FOR VENTILATION LUKKEANORDNING FOR VENTILASJON
[Symbol]	1	PUSH BUTTON/SWITCH FOR FIRE ALARM TRYKKKNAPPBRUTER FOR BRANNALARM
[Symbol]	6	CLASS A FIRE DOOR KLASSE A BRANNDØR
[Symbol]	1	A-CLASS SLIDING FIRE DOOR SKYVEBRANNDØR KLASSE A
[Symbol]	1	A-CLASS SLIDING FIRE DOOR SKYVEBRANNDØR KLASSE A
[Symbol]	1	CLASS A DIVISION KLASSE A AVDELING

EXITS UTGANGER

[Symbol]	9	EMERGENCY EXIT NØDUTGANG
[Symbol]		PRIMARY MEANS OF ESCAPE HOVEDRETNING VED EVAKUERING
[Symbol]		SECONDARY MEANS OF ESCAPE RESERVE EVAKUERINGSRETNING

DIVERSE MISCELLANEOUS

[Symbol]	36	EMERGENCY LIGHT NØDLYS
[Symbol]	2	LIGHT FOR LIFE SAVING EQUIPMENT LYS FOR UTSETTING AV REDNINGSUTSTYR
[Symbol]	1	GENERAL ALARM GENERAL ALARM

MAIN DIMENSIONS

LENGTH OVERALL, LOA:	64,30 m
LENGTH PP, LPP:	56,00 m
LENGTH CARDECK:	59,40 m
BEAM MOULDED:	11,25 m
LARGEST BEAM:	11,45 m
DEPTH:	4,20 m
DRAFT:	3,10 m
FRAME SPACING:	0,50 m
PASSENGERS:	145 PERS.
PBE:	50 CARS
SERVICE AREA: DOMESTIC AREA 2	

C2	OPPDATERT ANTALL PAX TIL 145 PERS.	2022-01-10 / VSO
C1	OPPDATERT TEKST VOR. Plassering av redningsdrakter	2021-06-09 / AA
C	OPPDATERT IHT. INFO FRA REDERI	2021-06-08 / AA
Rev.	Description:	Date/Sign.:
	Date: 08.06.2021	Contr./Drawn: J.R.
	Scale: 1:75	Contr.: AA
		Approved: VSO
		Date/Sign.:
BJKARKØY - L I I J BRANN- OG SIKKERHETSPLAN FIRE CONTROL AND SAFETY PLAN		www.nskshipdesign.com 5703-500-001_C2 Sheet no: 1 of 1
Reference: SDIR GODKJENNINGSBREV AV 26.10.2007		Replacement for: 1941-811-001_C2 Fire control and safety plan